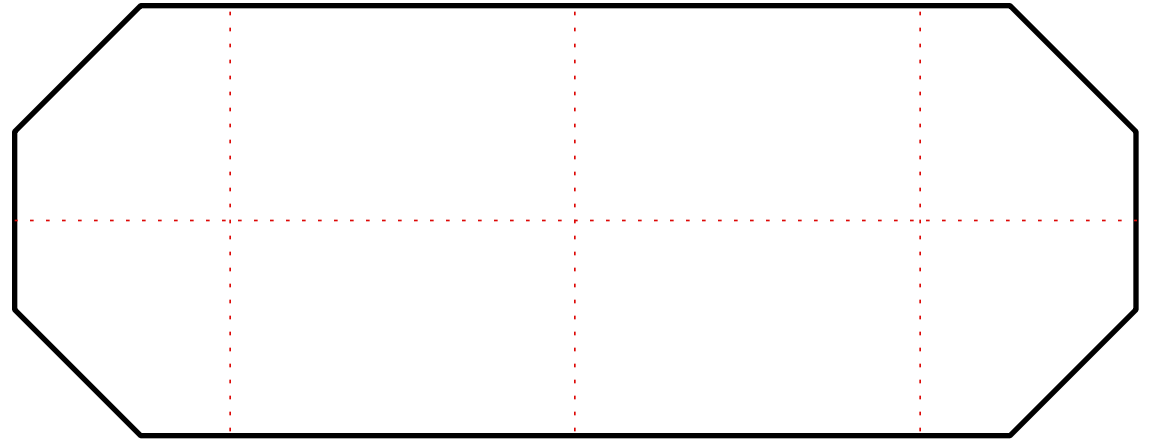
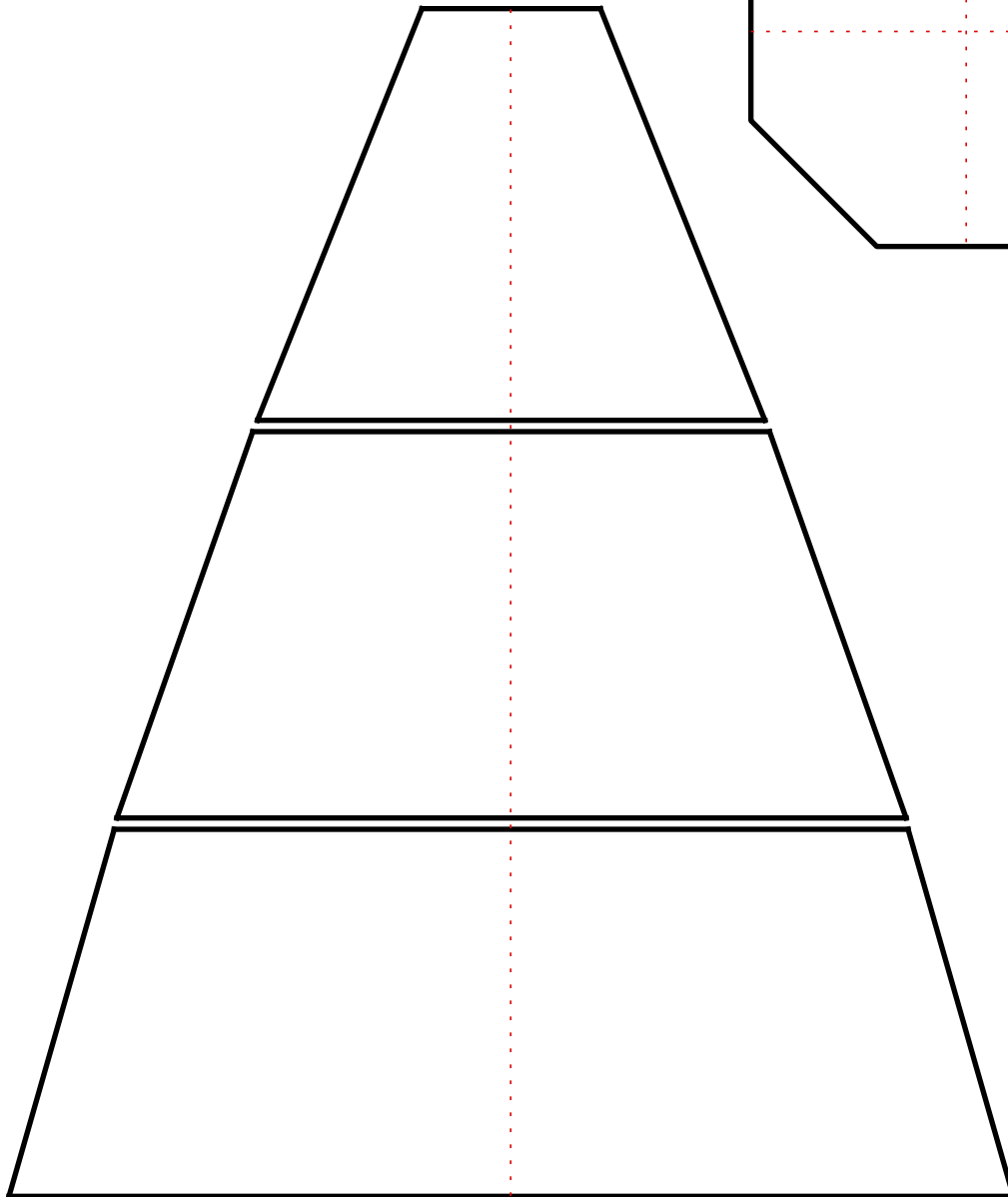


SKETCH PAD
(Proportional to Full-Size)
Bottom of Largest Trapezoid
is Approx. 18" wide
(Ht., each panel = ~ 6" - 7")
For Frame Series #4800
The Dome
45.5" / 8-sided

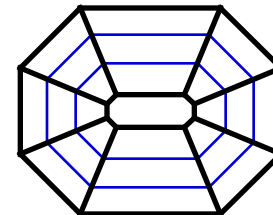
Use this SKETCH PAD to design custom designs for your dome. The lines shown are the "glass lines" of each panel, properly spaced as the panels will set in the frame.



SKETCH PAD
(Proportional to Full-Size)
Bottom of Largest Trapezoid
is Approx. 18" wide
(Ht., each panel = ~ 6" - 7")
For Frame Series #4800x5
The Dome
45.5"x57.5" / 8-sided

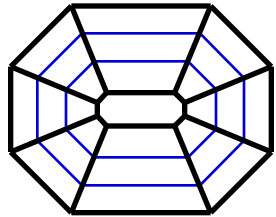
Pg. 1 of 2

Use this SKETCH PAD to design custom designs for your dome. The lines shown are the "glass lines" of each panel, properly spaced as the panels will set in the frame.



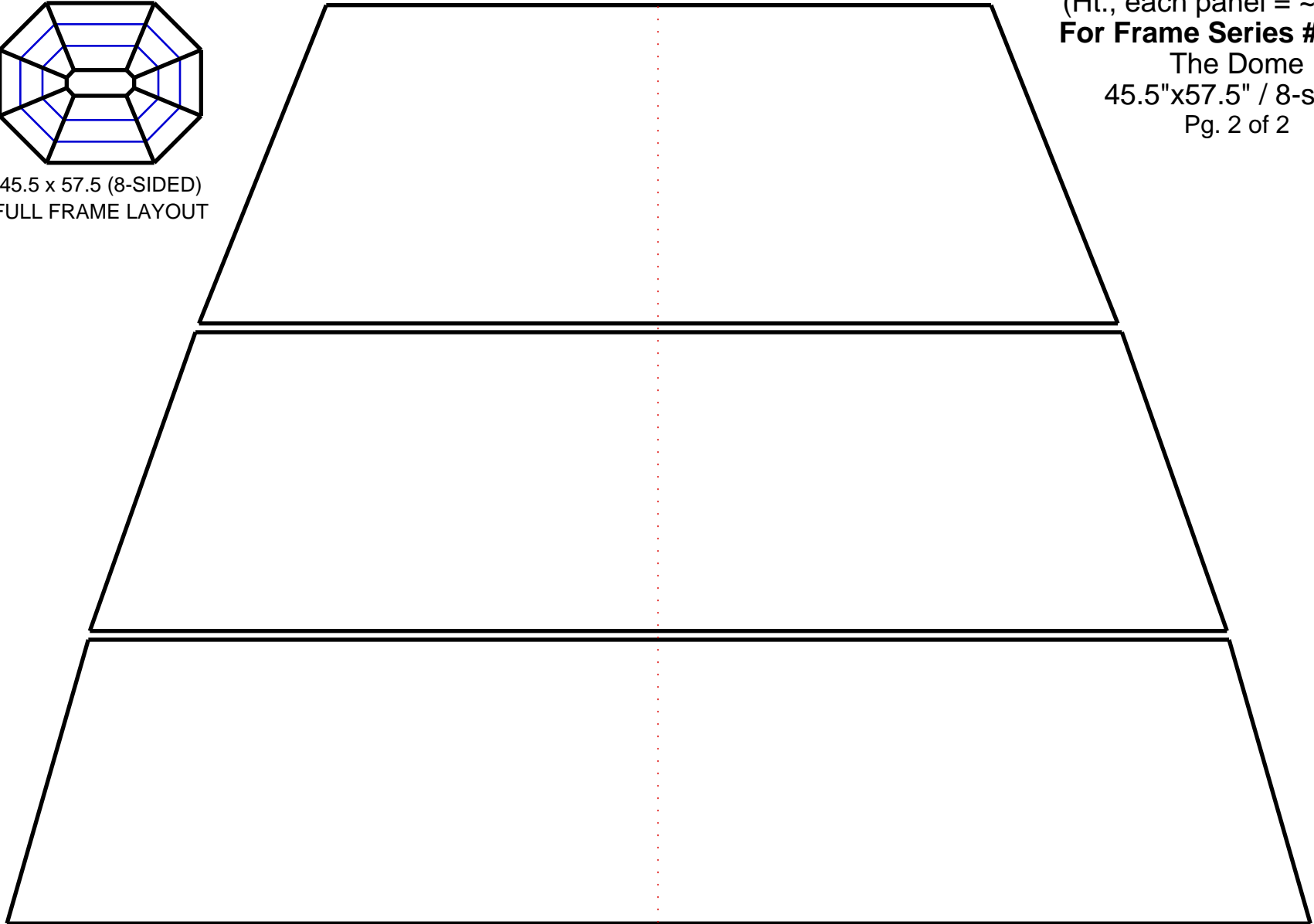
45.5 x 57.5 (8-SIDED)
FULL FRAME LAYOUT

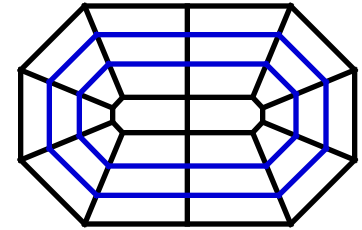
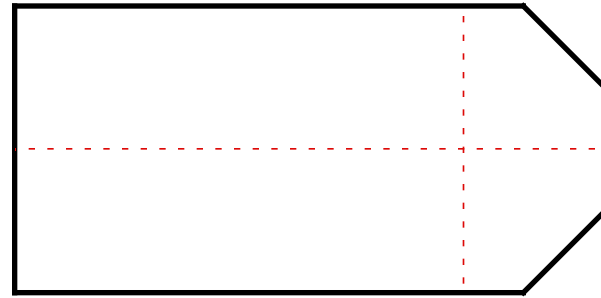
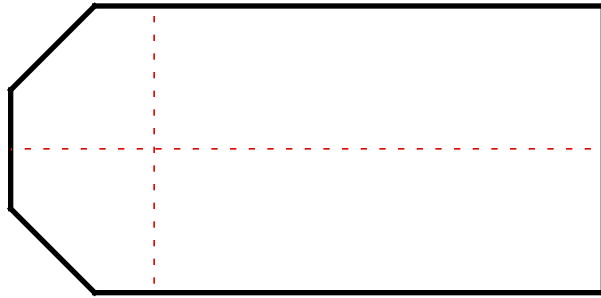
Use this SKETCH PAD to design custom designs for your dome. The lines shown are the "glass lines" of each panel, properly spaced as the panels will set in the frame.



45.5 x 57.5 (8-SIDED)
FULL FRAME LAYOUT

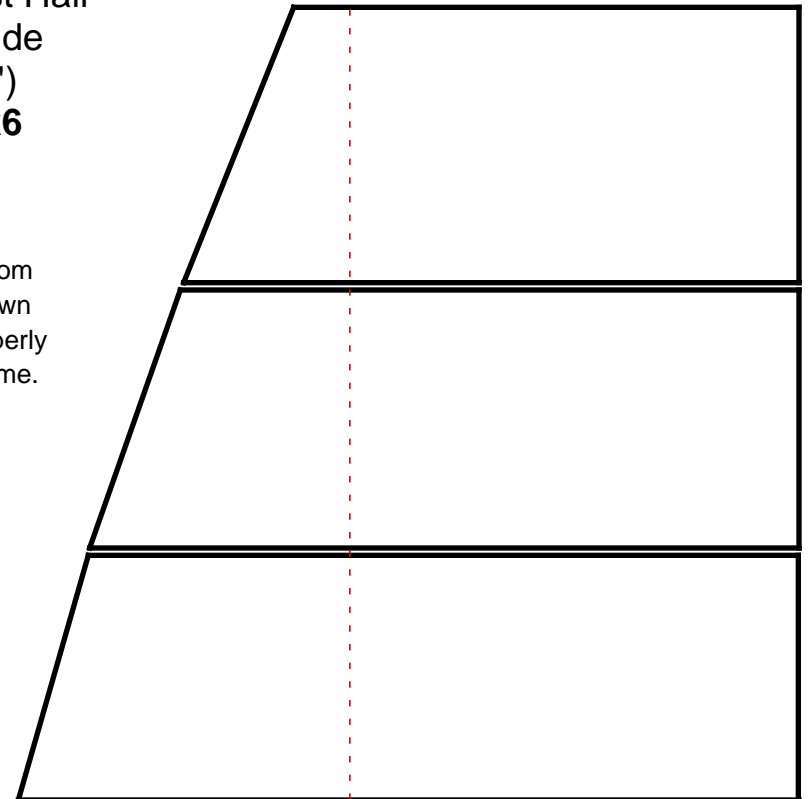
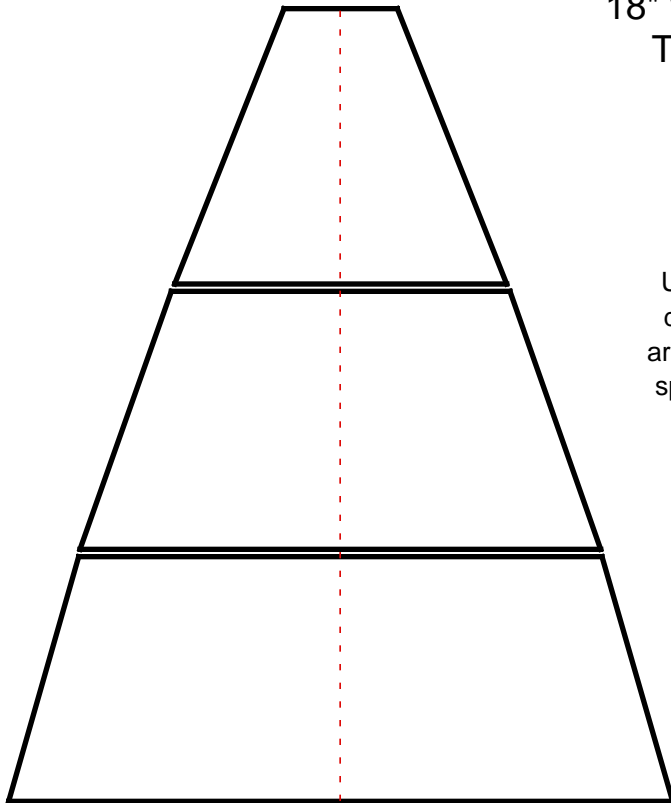
SKETCH PAD
(Proportional to Full-Size)
Bottom of Largest Trapezoid
is Approx. 30" wide
(Ht., each panel = ~ 6" - 7")
For Frame Series #4800x5
The Dome
45.5"x57.5" / 8-sided
Pg. 2 of 2

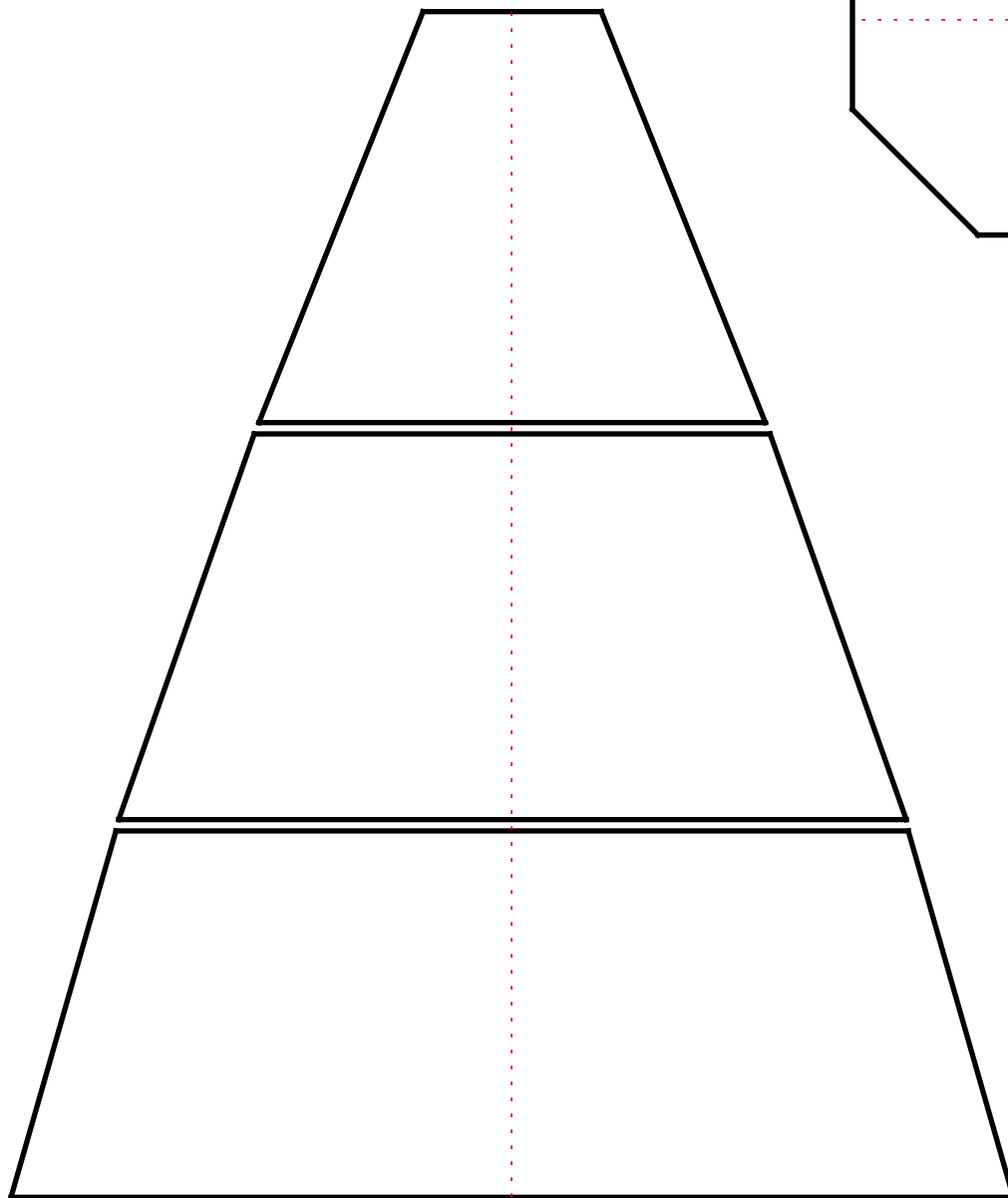




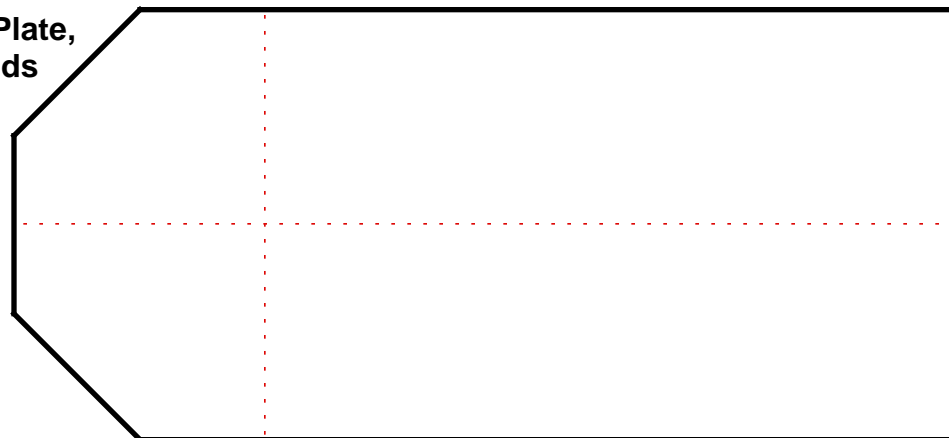
SKETCH PAD
(Proportional to Full-Size)
Bottom of Largest Trapezoid is Approx.
18" wide and Bottom of Largest Half
Trapezoid is Approx. 21" Wide
(Ht., each panel = ~ 6" - 7")
For Frame Series #4800x6
The Dome
45.5"x69.5" / 8-sided

Use this SKETCH PAD to design custom
designs for your dome. The lines shown
are the "glass lines" of each panel, properly
spaced as the panels will set in the frame.

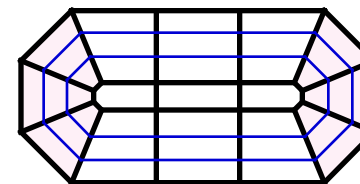




Top Plate,
Ends

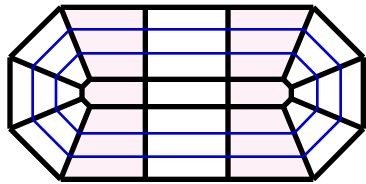


SKETCH PAD
 (Proportional to Full-Size)
 Bottom of Largest End
 Trapezoid is Approx. 18" wide
 (Ht., each panel = ~ 6" - 7")
For Frame Series #4800x8
 The Dome
 45.5"x93.5" / 8-sided
 Pg. 1 of 3



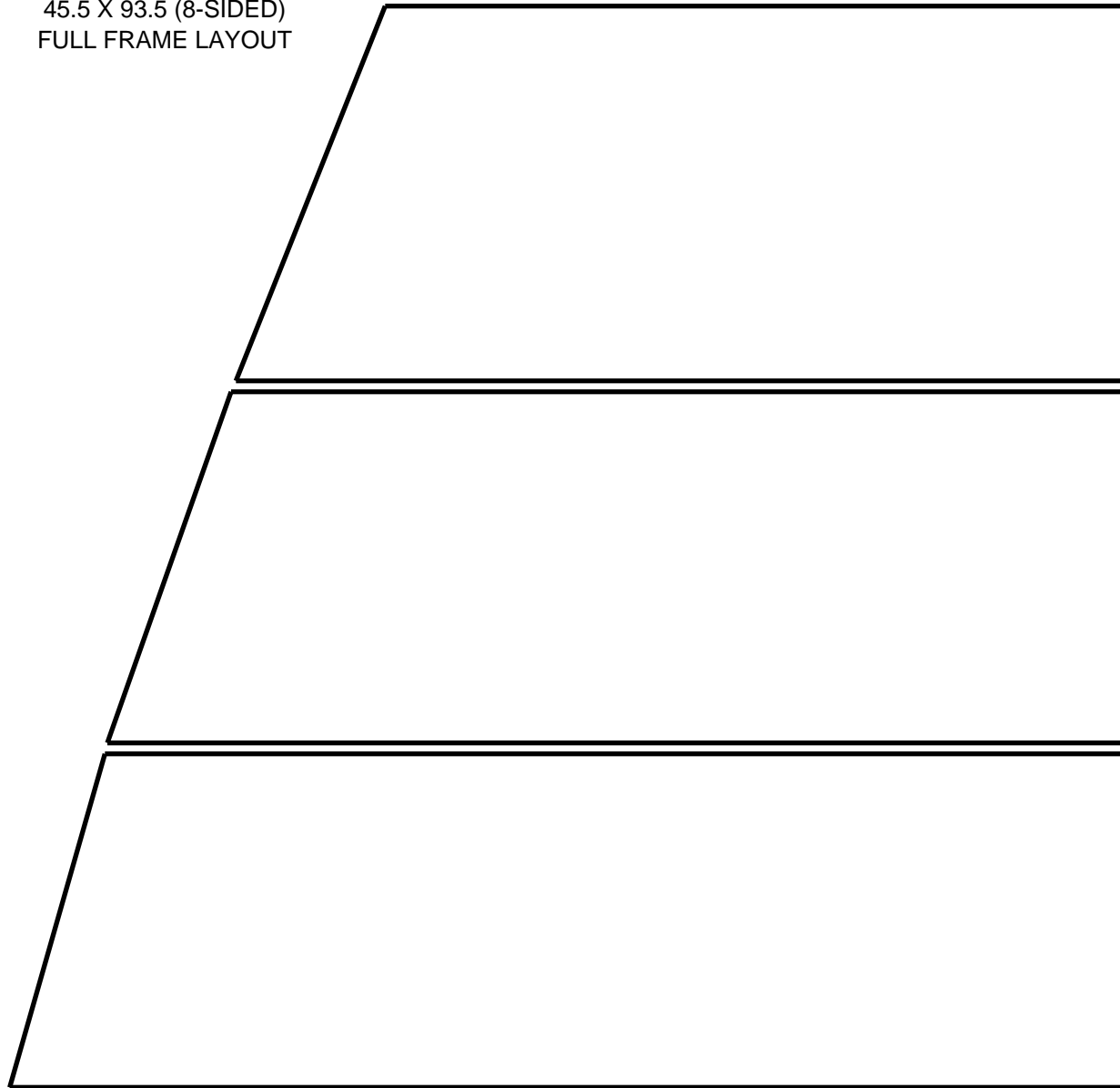
45.5 X 93.5 (8-SIDED)
 FULL FRAME LAYOUT

Use this SKETCH PAD to design custom designs for your dome. The lines shown are the "glass lines" of each panel, properly spaced as the panels will set in the frame.

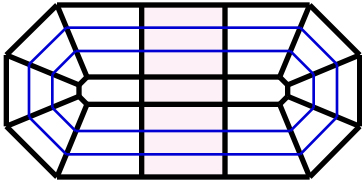


45.5 X 93.5 (8-SIDED)
FULL FRAME LAYOUT

Use this SKETCH PAD to design custom designs for your dome. The lines shown are the "glass lines" of each panel, properly spaced as the panels will set in the frame.

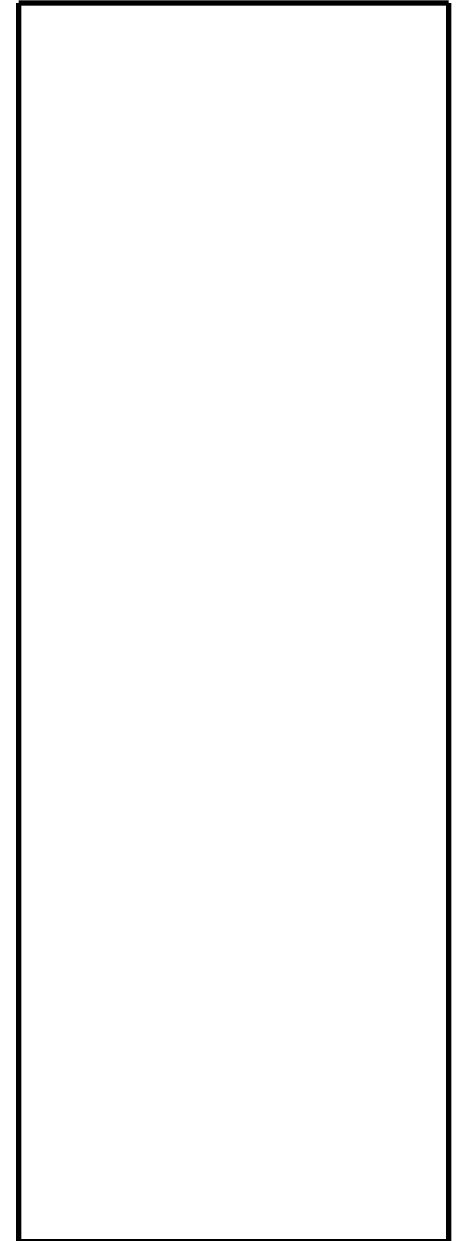
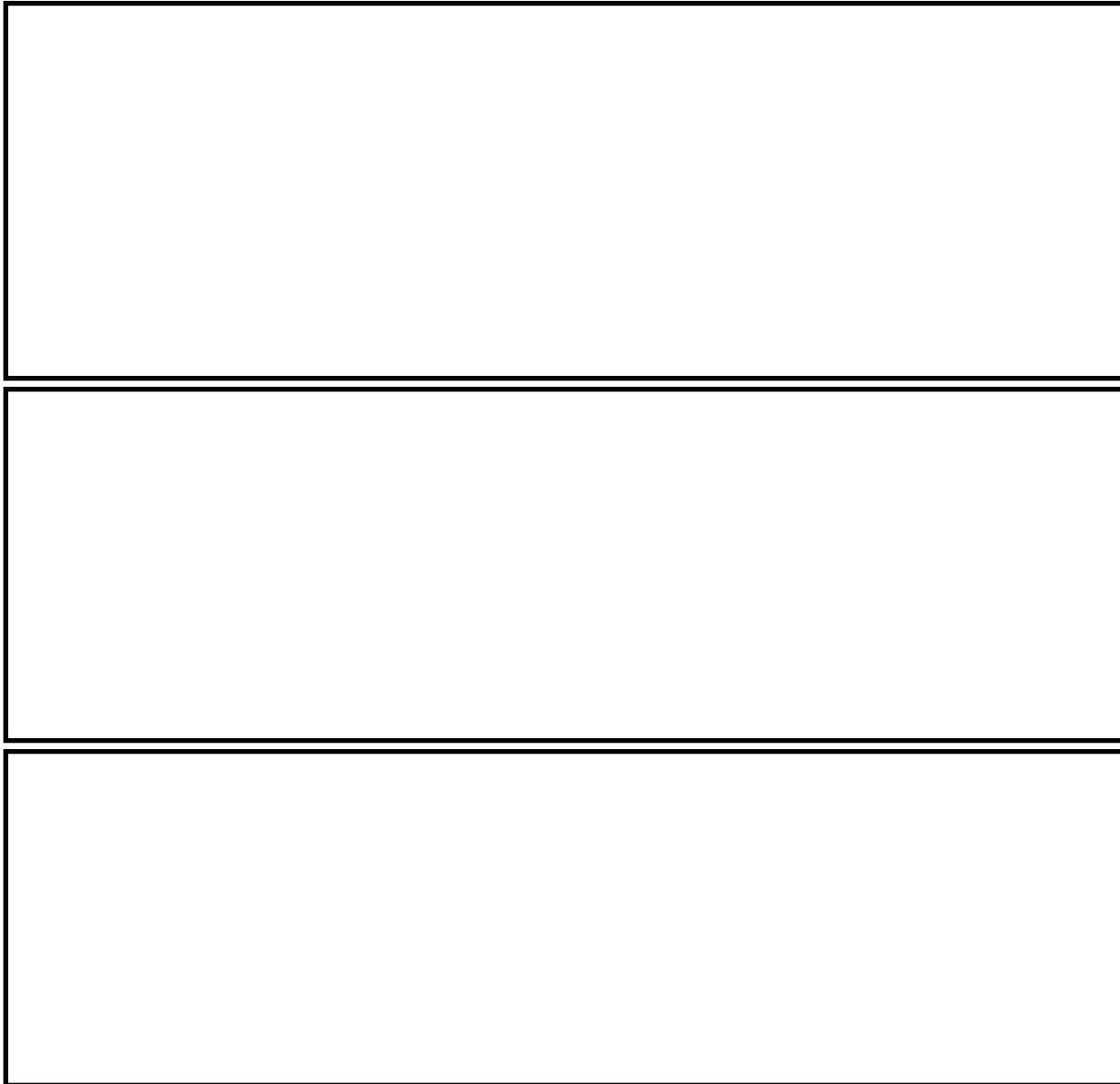


SKETCH PAD
(Proportional to Full-Size)
Bottom of Largest Half
Trapezoid & Rectangle is
Approx. 22" wide
(Ht., each panel = ~ 6" - 7")
For Frame Series #4800x8
The Dome
45.5"x93.5" / 8-sided
Pg. 2 of 3

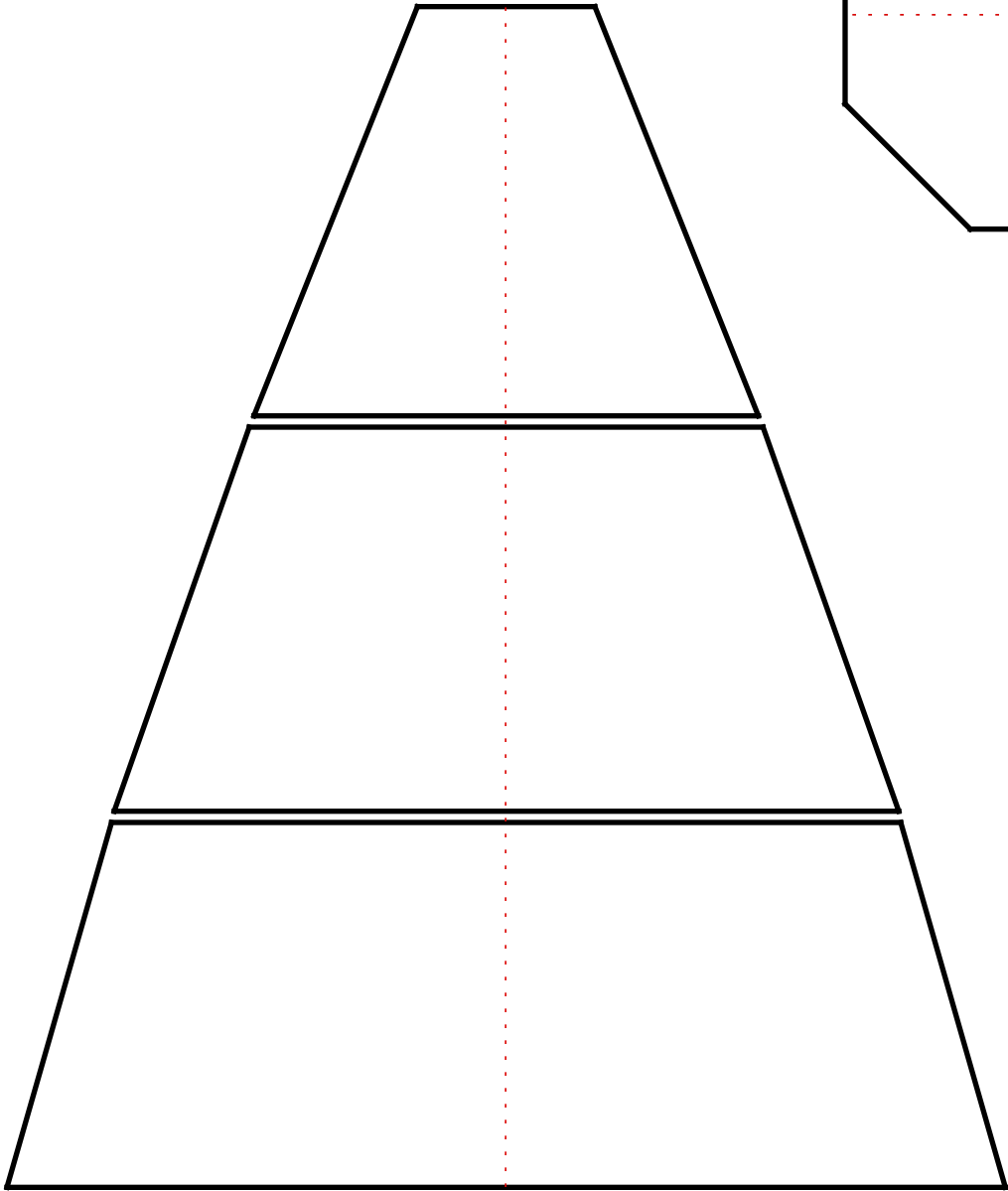


45.5 X 93.5 (8-SIDED)
FULL FRAME LAYOUT

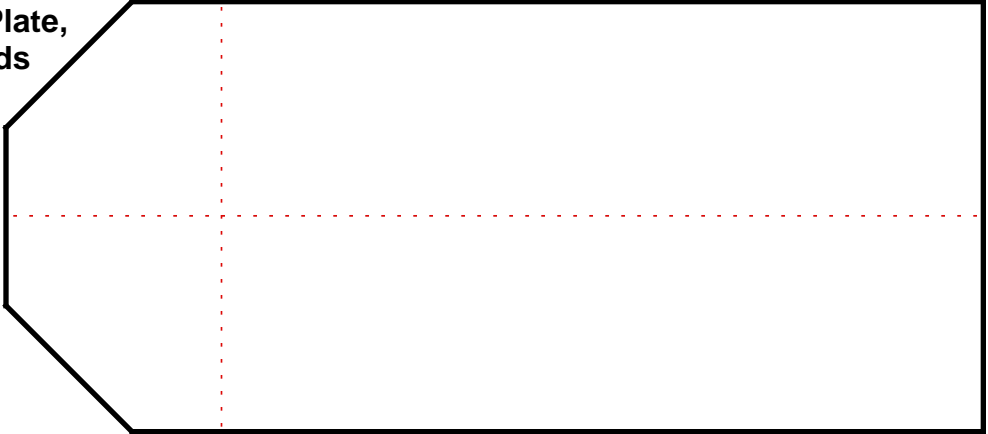
Top Plate,
Center



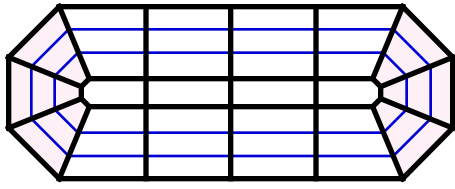
For Frame Series #4800x8
The Dome
45.5"x93.5" / 8-sided
Pg. 3 of 3



Top Plate,
Ends

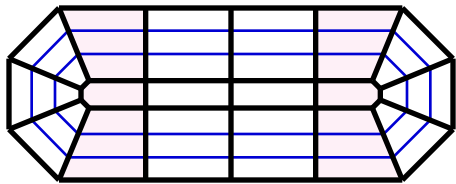


SKETCH PAD
 (Proportional to Full-Size)
 Bottom of Largest End
 Trapezoid is Approx. 18" wide
 (Ht., each panel = ~ 6" - 7")
For Frame Series #4800x10
 The Dome
 45.5"x117.5" / 8-sided
 Pg. 1 of 3



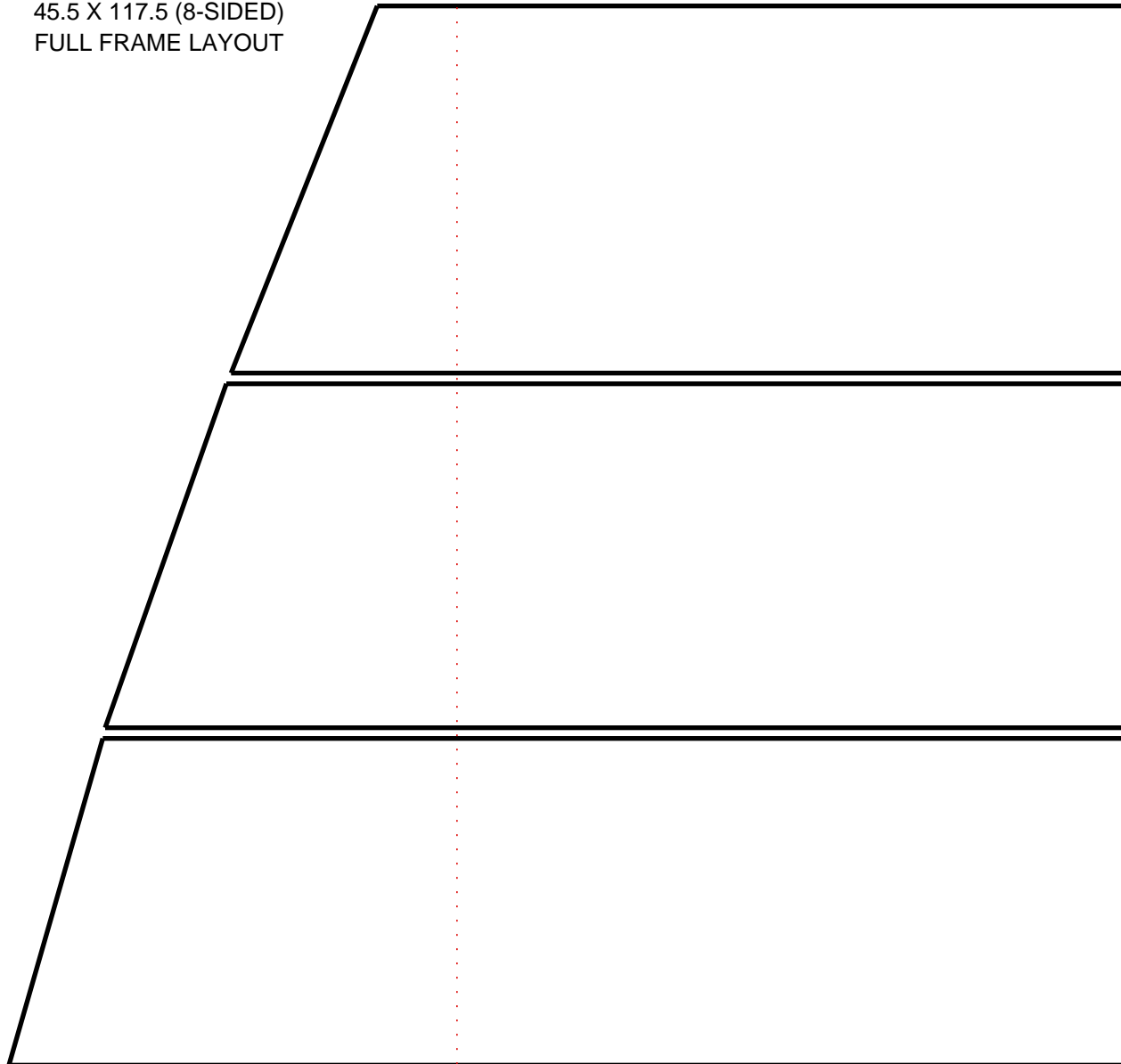
45.5 X 117.5 (8-SIDED)
 FULL FRAME LAYOUT

Use this SKETCH PAD to design custom designs for your dome. The lines shown are the "glass lines" of each panel, properly spaced as the panels will set in the frame.

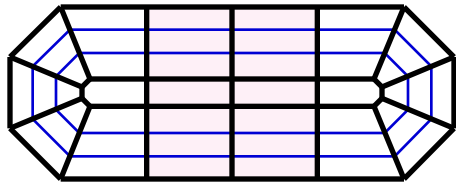


45.5 X 117.5 (8-SIDED)
FULL FRAME LAYOUT

Use this SKETCH PAD to design custom designs for your dome. The lines shown are the "glass lines" of each panel, properly spaced as the panels will set in the frame.

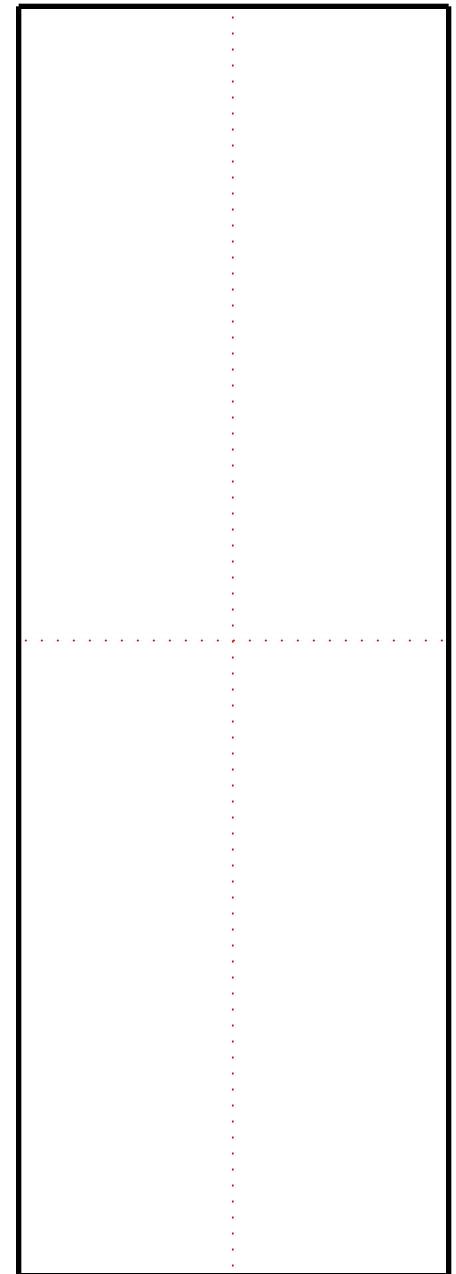
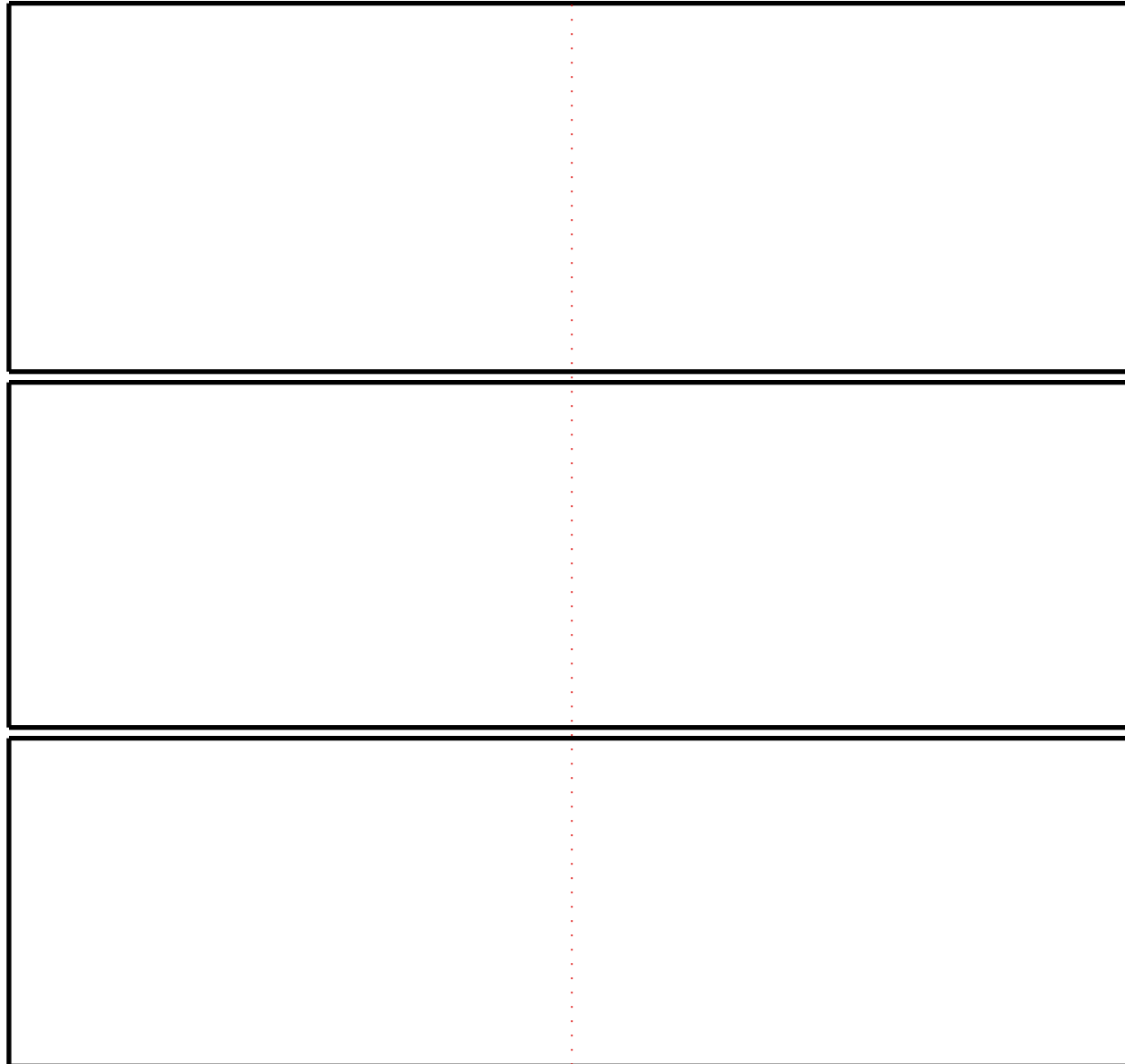


SKETCH PAD
(Proportional to Full-Size)
Bottom of Largest Half
Trapezoid & Rectangle is
Approx. 22" wide
(Ht., each panel = ~ 6" - 7")
For Frame Series #4800x10
The Dome
45.5"x117.5" / 8-sided
Pg. 2 of 3



45.5 X 117.5 (8-SIDED)
FULL FRAME LAYOUT

Top Plate,
Center

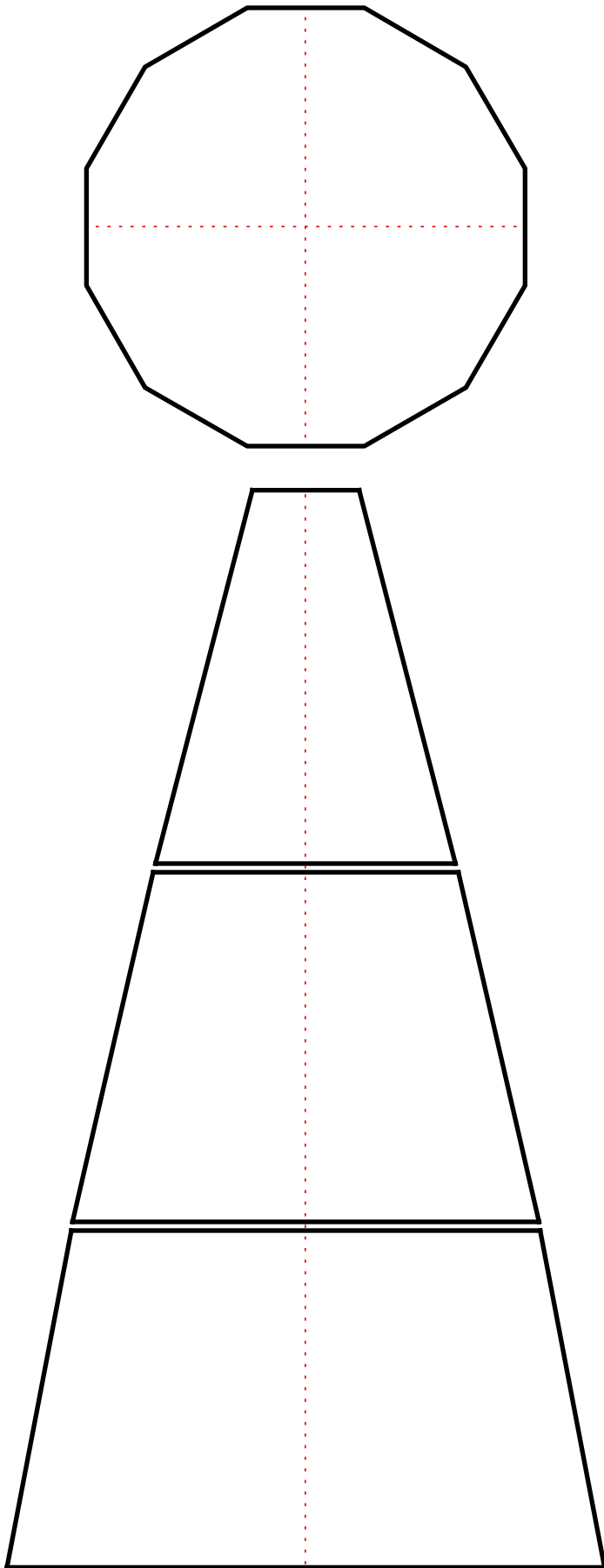


For Frame Series #4800x10

The Dome

45.5"x117.5" / 8-sided

Pg. 3 of 3



SKETCH PAD
(Proportional to Full-Size)
Bottom of Largest Trapezoid is
Approx. 15" wide
(Ht., each panel = ~ 9")
For Frame Series #5200
SupraDome57.8" (12-sided)

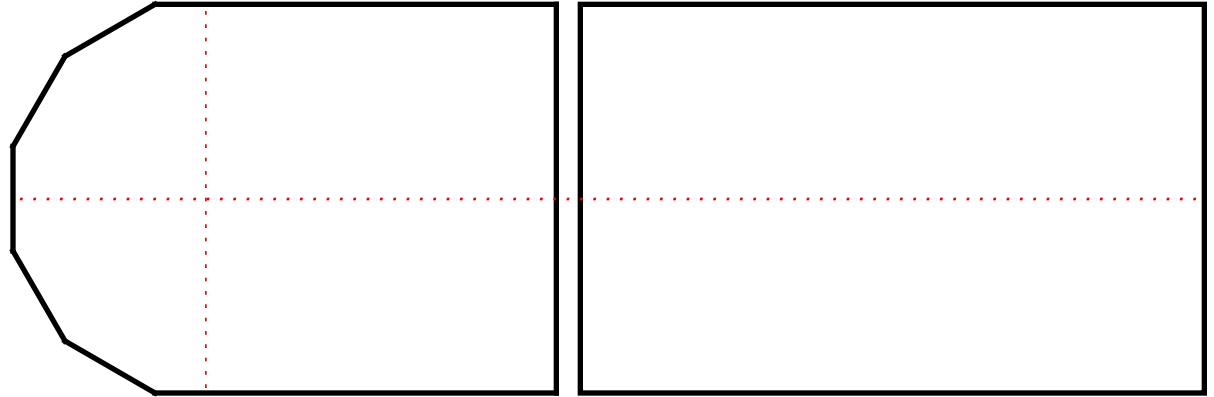
Use this SKETCH PAD to design custom designs for your dome. The lines shown are the "glass lines" of each panel, properly spaced as the panels will set in the frame.

SKETCH PAD

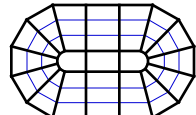
(Proportional to Full-Size)

Bottom of Largest Trapezoid is
Approx. 15" wide and Largest
Half-Trapezoid is ~17" wide
(Ht., each panel = ~ 9")

For Frame Series #5200X8
57.8"x93.5" / 12-sided

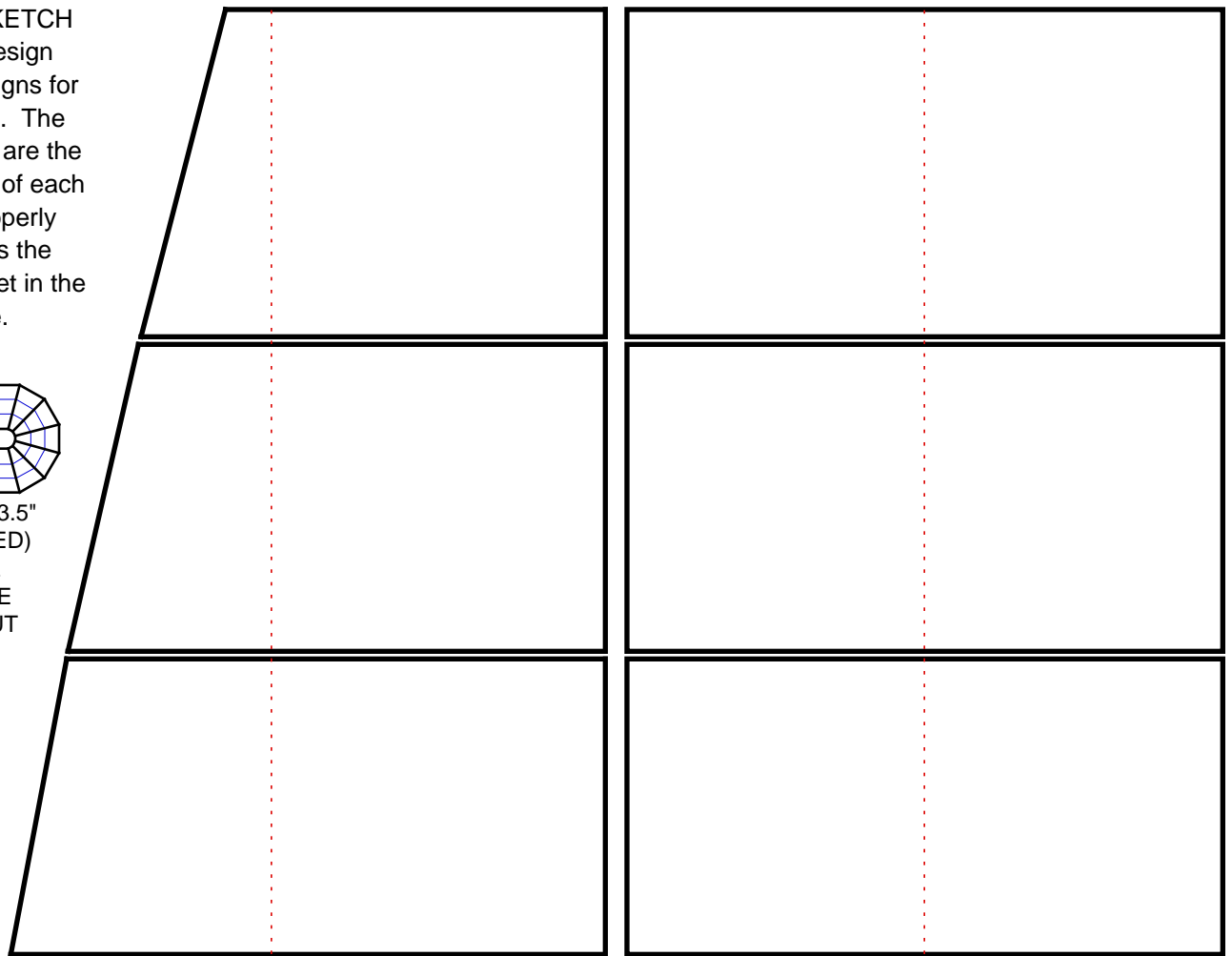
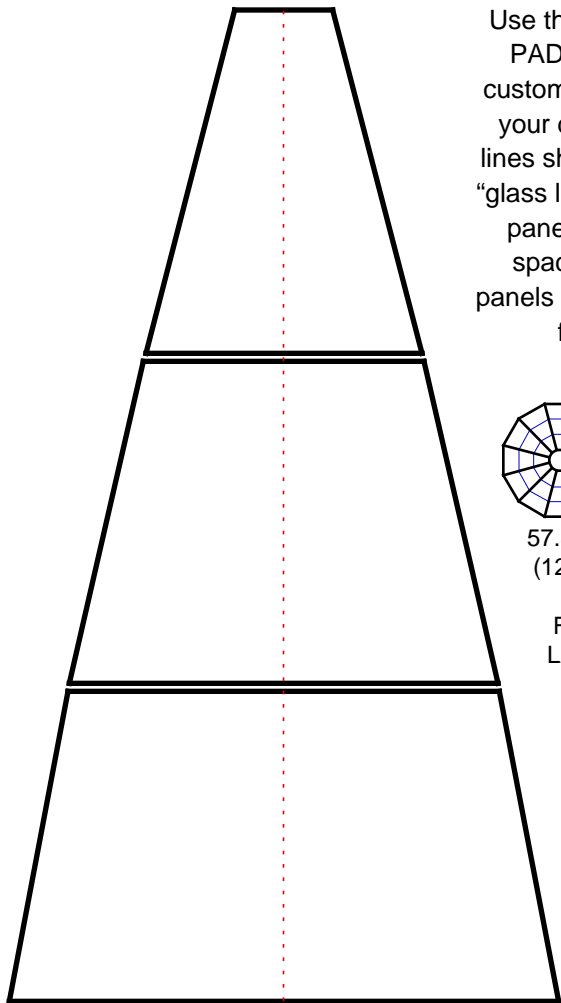


Use this SKETCH
PAD to design
custom designs for
your dome. The
lines shown are the
"glass lines" of each
panel, properly
spaced as the
panels will set in the
frame.



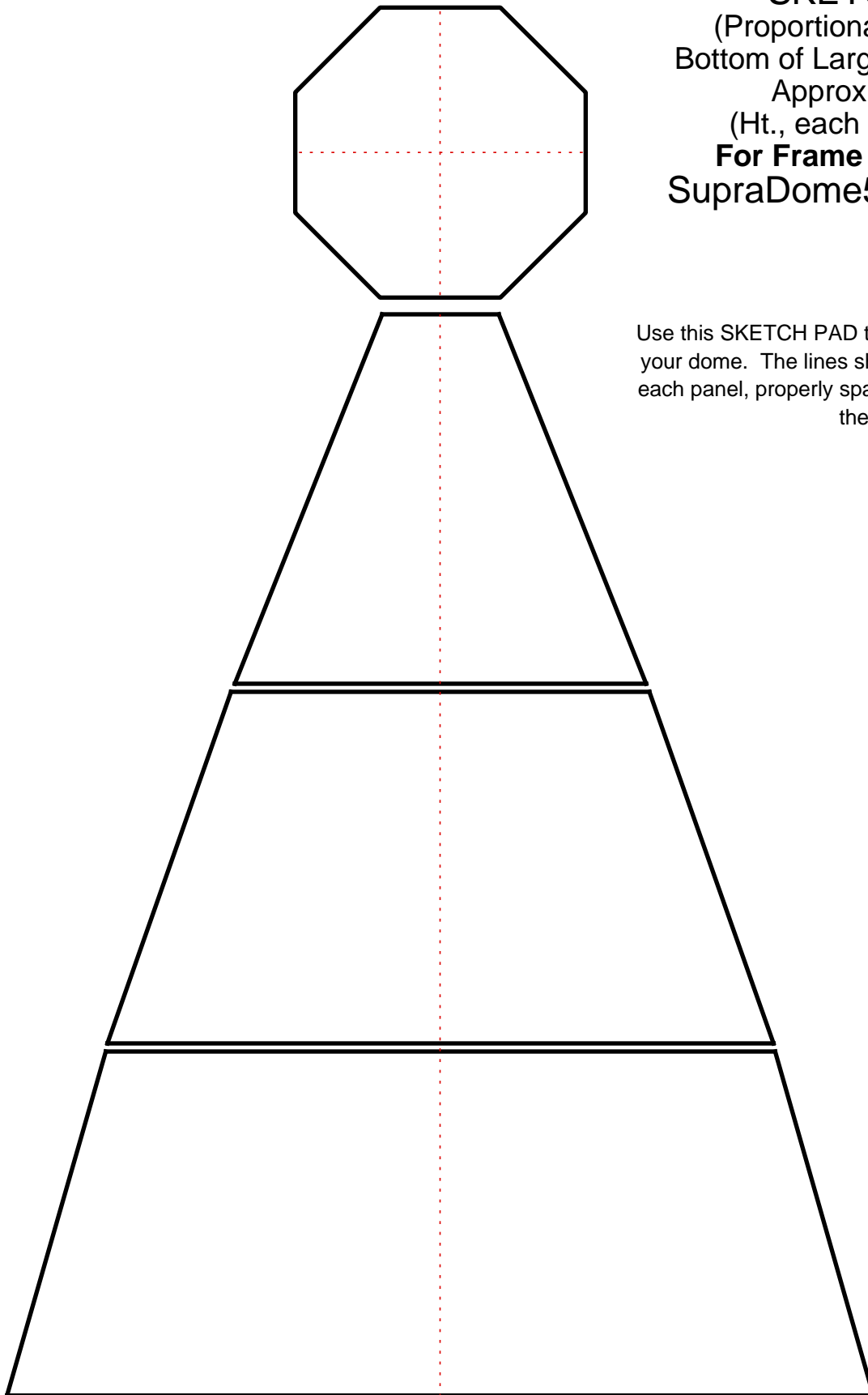
57.8" x 93.5"
(12-SIDED)

FULL
FRAME
LAYOUT

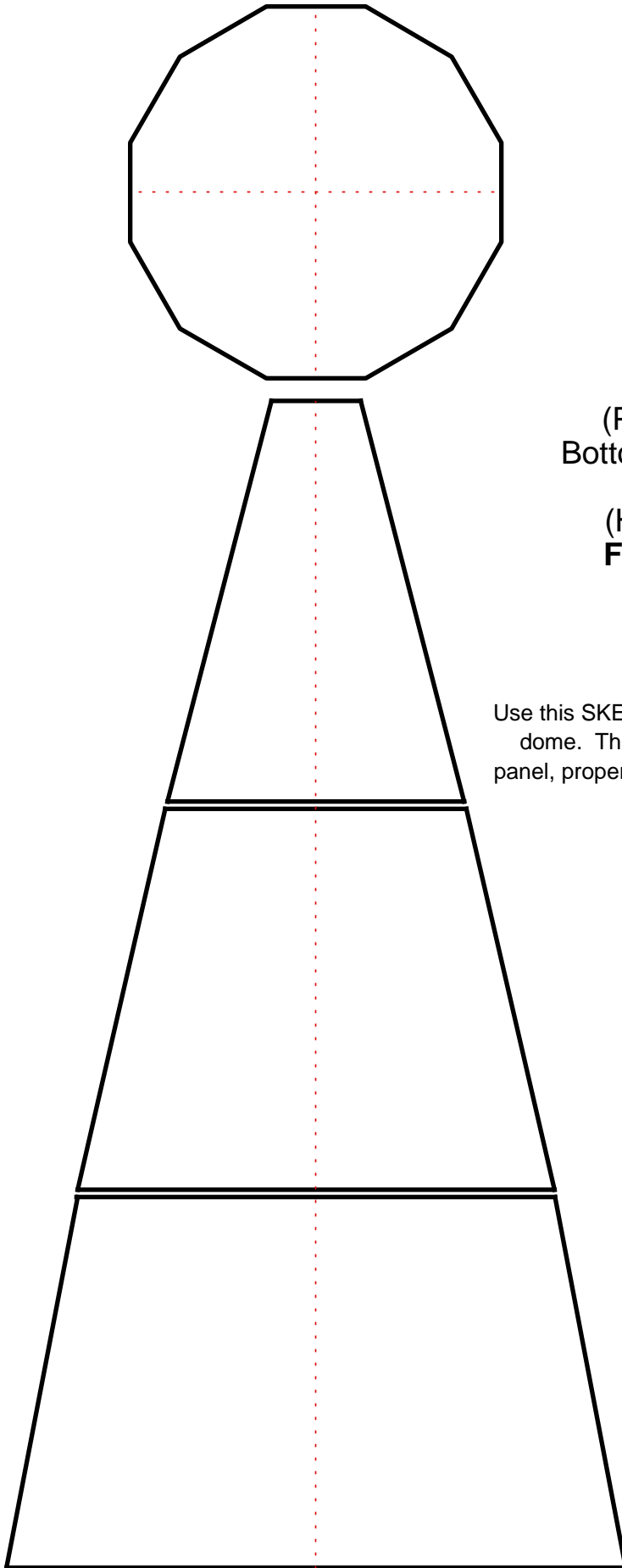


SKETCH PAD

(Proportional to Full-Size)
Bottom of Largest Trapezoid is
Approx. 23" wide
(Ht., each panel = ~ 9")
For Frame Series #5800
SupraDome57.6" (8-sided)

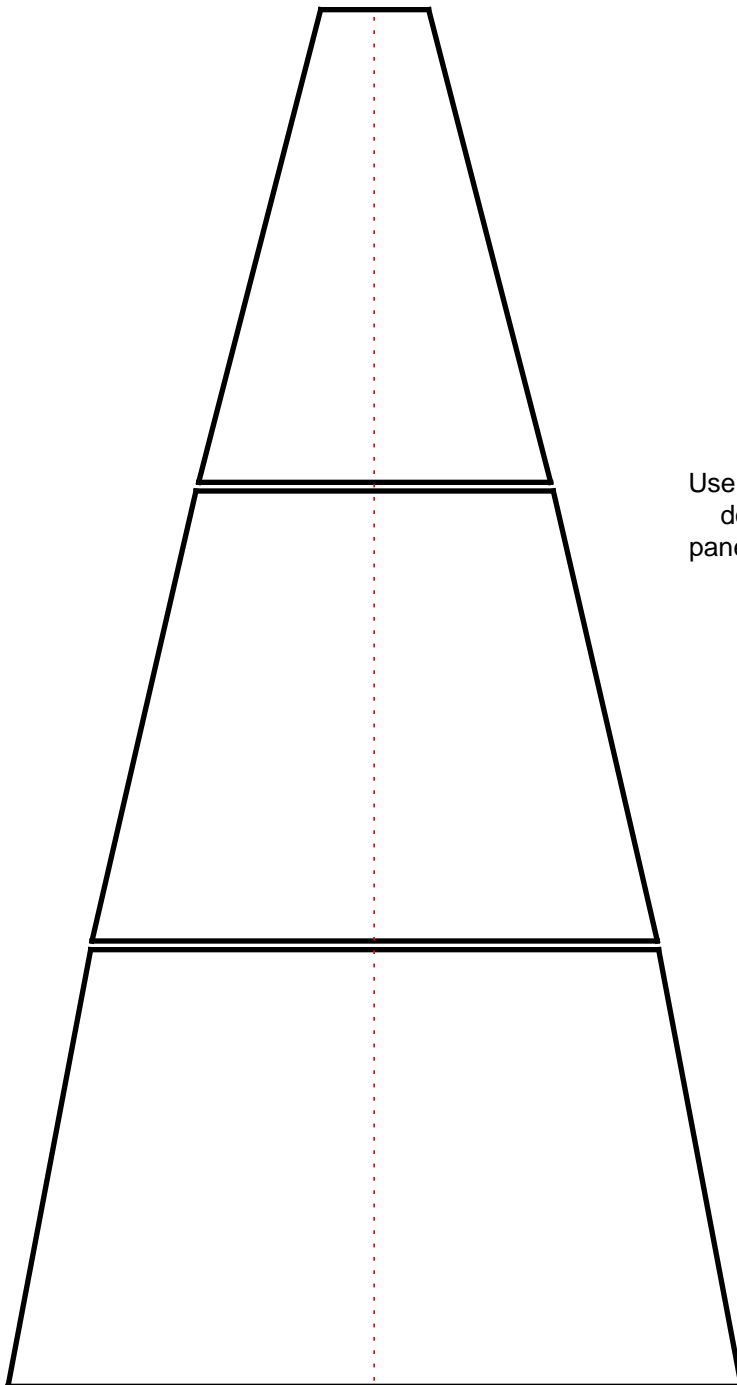
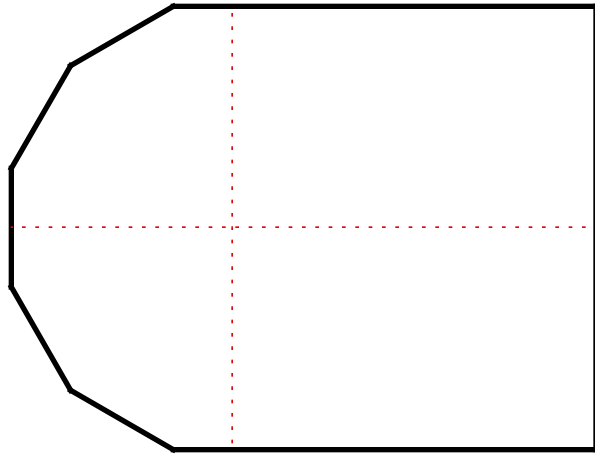


Use this SKETCH PAD to design custom designs for your dome. The lines shown are the "glass lines" of each panel, properly spaced as the panels will set in the frame.



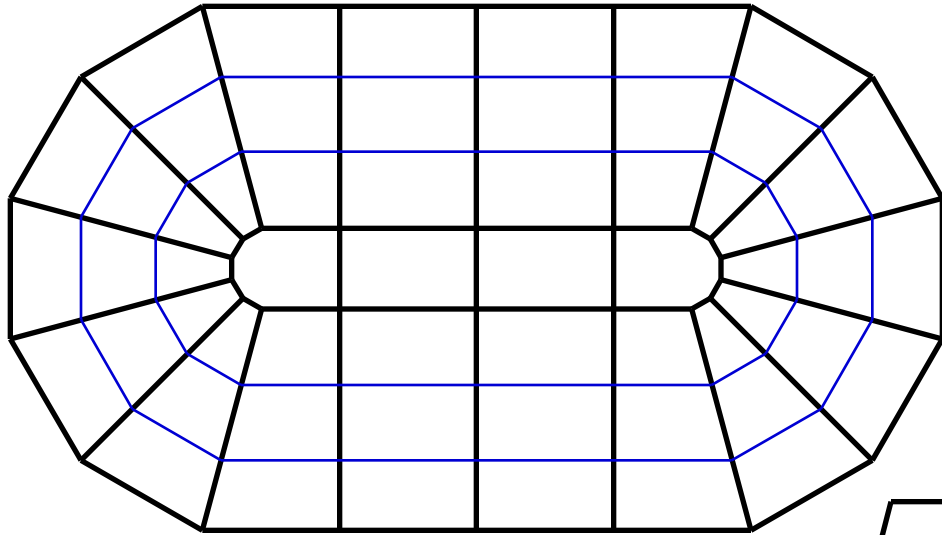
SKETCH PAD
(Proportional to Full-Size)
Bottom of Largest Trapezoid is
Approx. 18" wide
(Ht., each panel = ~ 11")
For Frame Series #6200
69.3" / 12-sided

Use this SKETCH PAD to design custom designs for your dome. The lines shown are the "glass lines" of each panel, properly spaced as the panels will set in the frame.



SKETCH PAD
(Proportional to Full-Size)
Bottom of Largest Trapezoid
is Approx. 18" wide
(Ht., each panel = ~ 11")
For Frame Series #6200x10
The Dome
69.3"x123.3" / 8-sided
Pg. 1 of 3

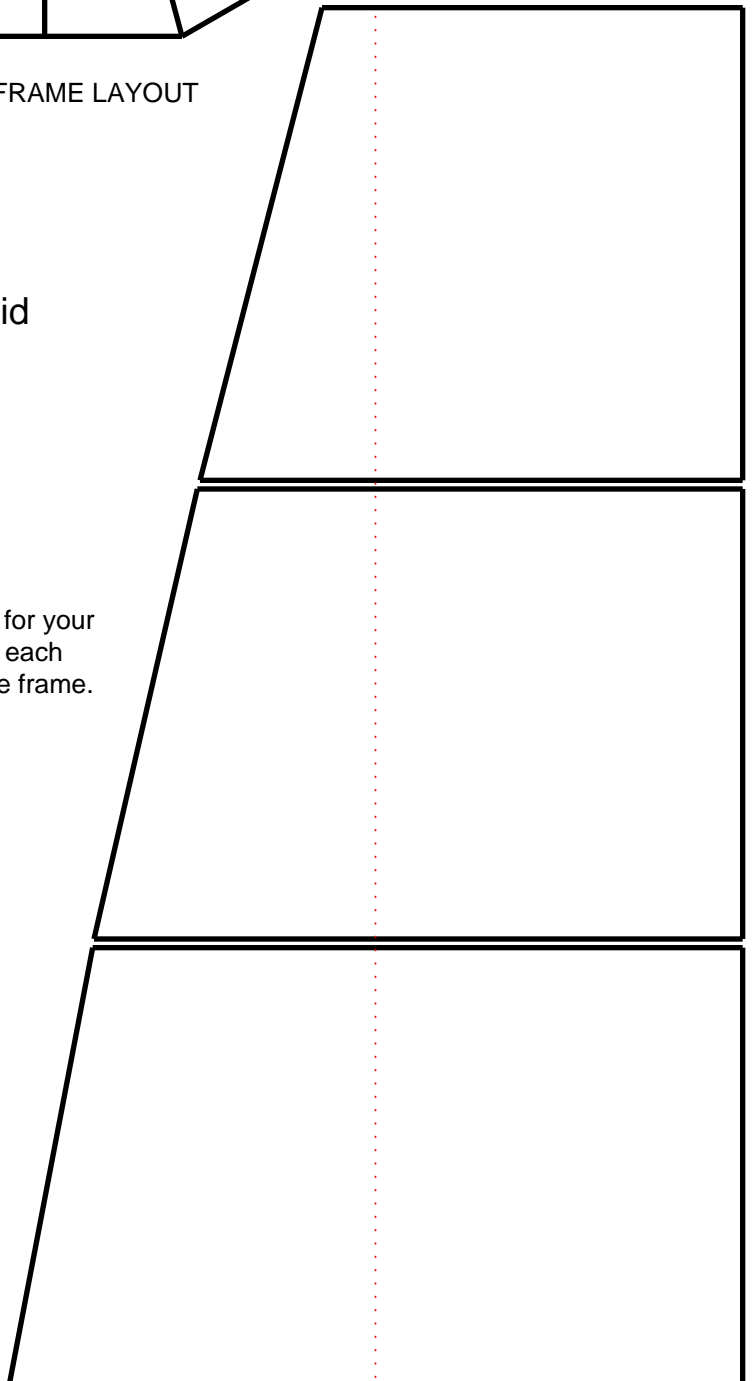
Use this SKETCH PAD to design custom designs for your dome. The lines shown are the "glass lines" of each panel, properly spaced as the panels will set in the frame.

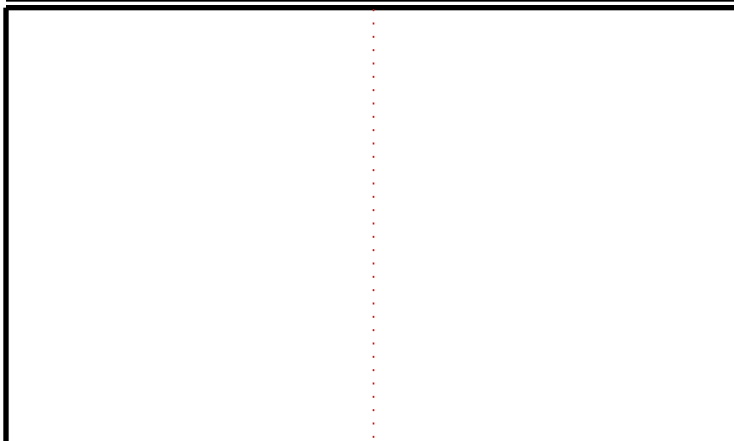
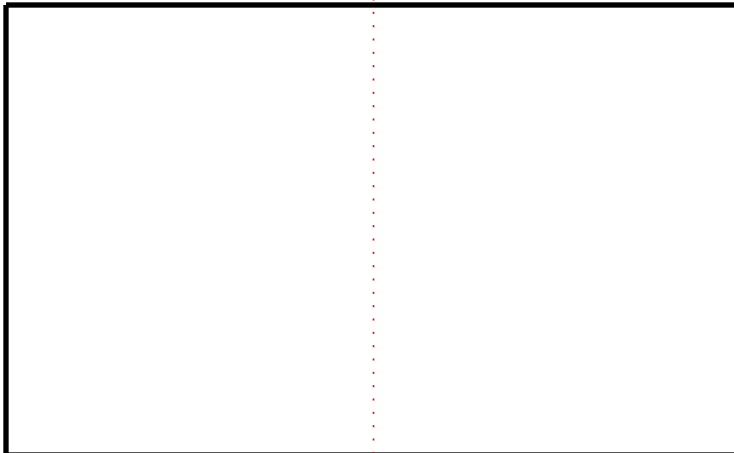
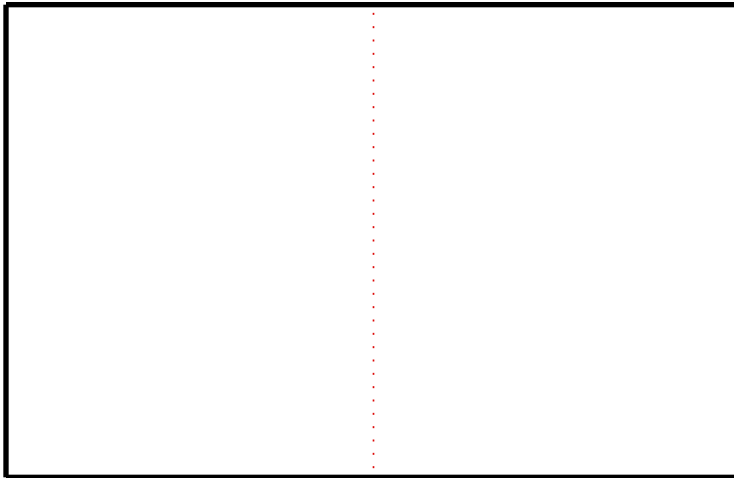
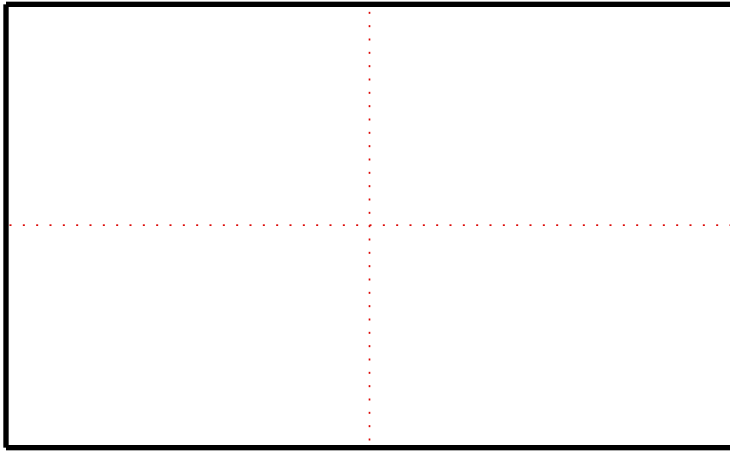


69.3 X 123.3 (12-SIDED) FULL FRAME LAYOUT

SKETCH PAD
(Proportional to Full-Size)
Bottom of Largest Half-Trapezoid
is Approx. 18" wide
(Ht., each panel = ~ 11")
For Frame Series #6200x10
The Dome
69.3"x123.3" / 8-sided
Pg. 2 of 3

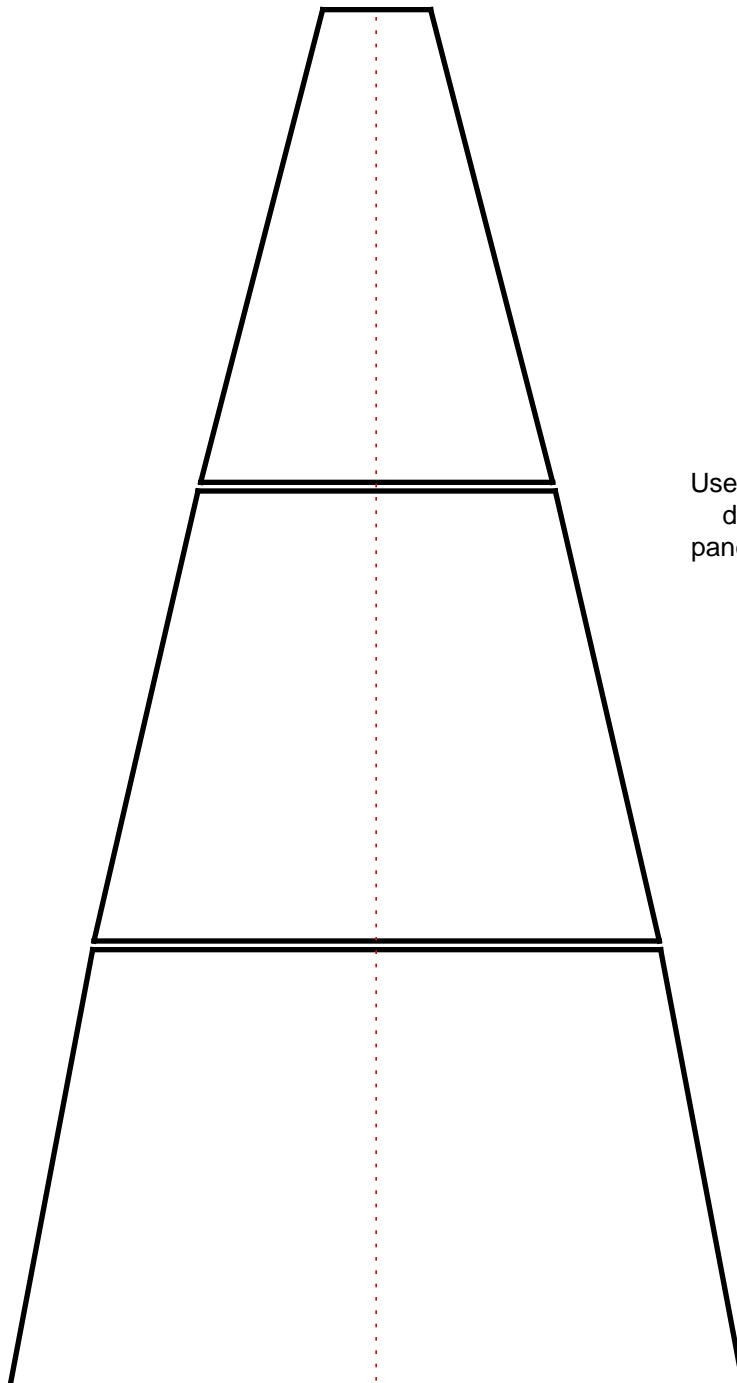
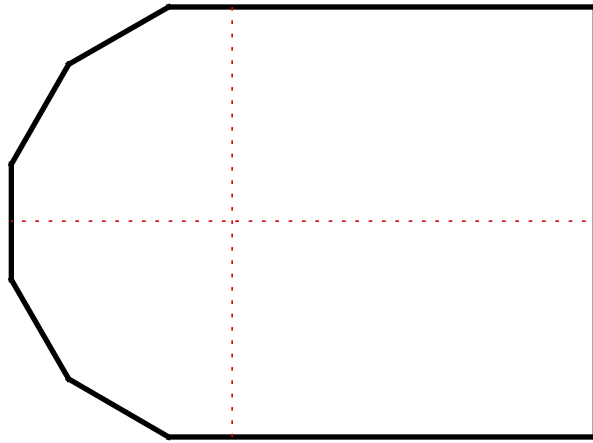
Use this SKETCH PAD to design custom designs for your dome. The lines shown are the "glass lines" of each panel, properly spaced as the panels will set in the frame.





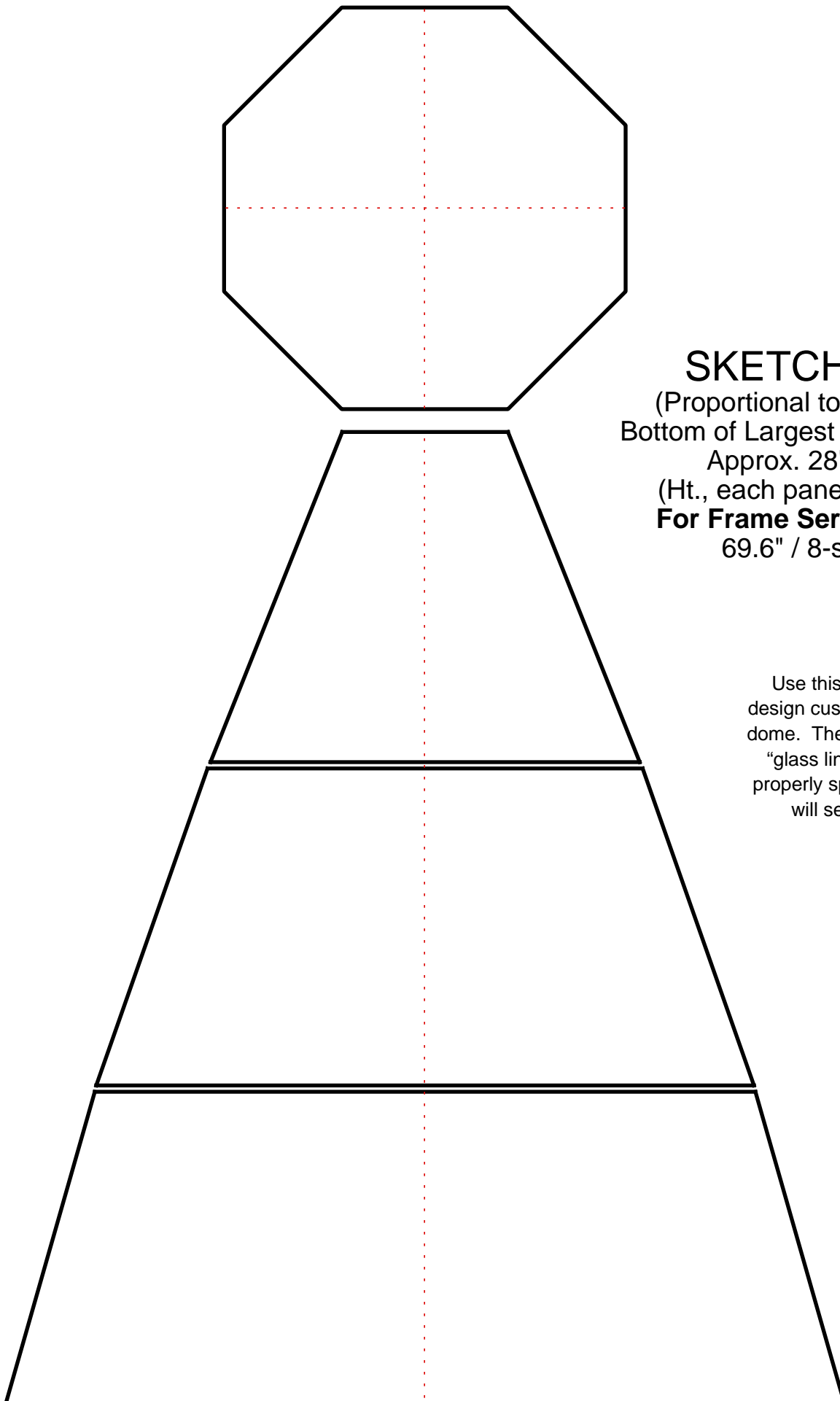
SKETCH PAD
(Proportional to Full-Size)
Bottom of Largest Rectangle
is Approx. 18" wide
(Ht., each panel = ~ 11")
For Frame Series #6200x10
The Dome
69.3"x123.3" / 8-sided
Pg. 3 of 3

Use this SKETCH PAD to design custom designs for your dome. The lines shown are the "glass lines" of each panel, properly spaced as the panels will set in the frame.



SKETCH PAD
(Proportional to Full-Size)
Bottom of Largest Trapezoid
is Approx. 18" wide
(Ht., each panel = ~ 11")
For Frame Series #6200x12
The Dome
69.3"x141.5" / 8-sided
Pg. 1 of 3

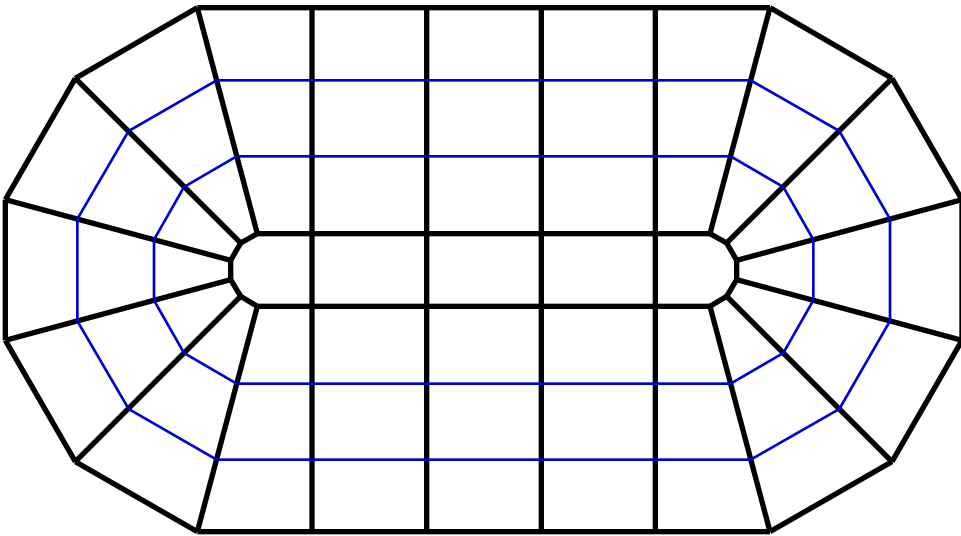
Use this SKETCH PAD to design custom designs for your dome. The lines shown are the "glass lines" of each panel, properly spaced as the panels will set in the frame.



SKETCH PAD

(Proportional to Full-Size)
Bottom of Largest Trapezoid is
Approx. 28" wide
(Ht., each panel = ~ 10")
For Frame Series #6800
69.6" / 8-sided

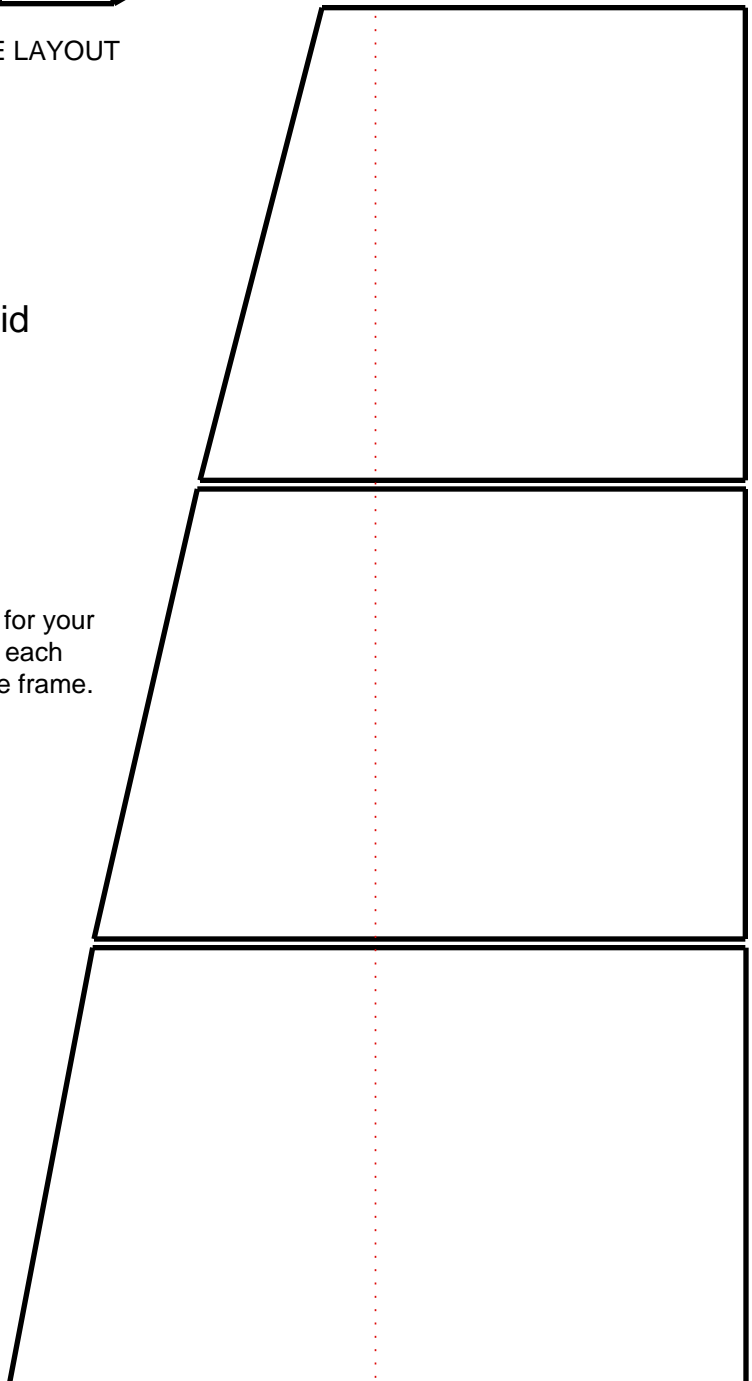
Use this SKETCH PAD to
design custom designs for your
dome. The lines shown are the
"glass lines" of each panel,
properly spaced as the panels
will set in the frame.

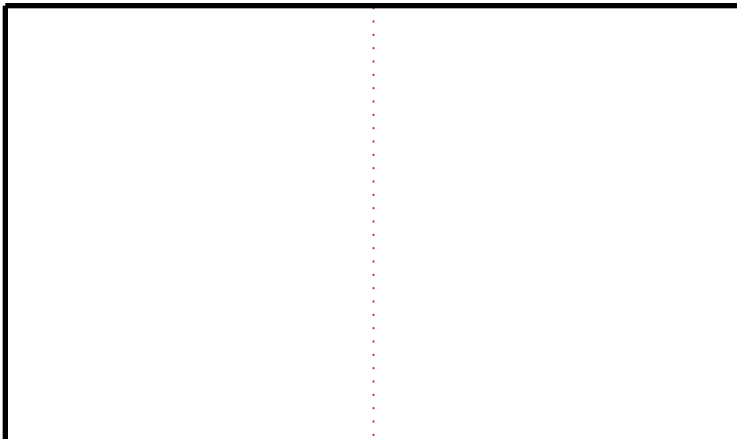
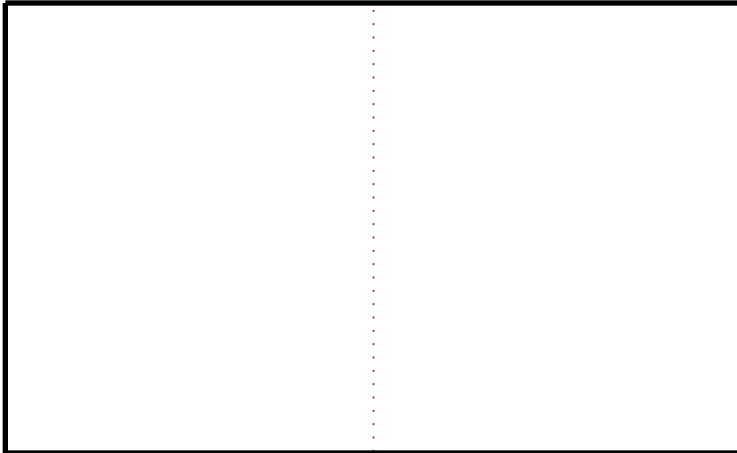
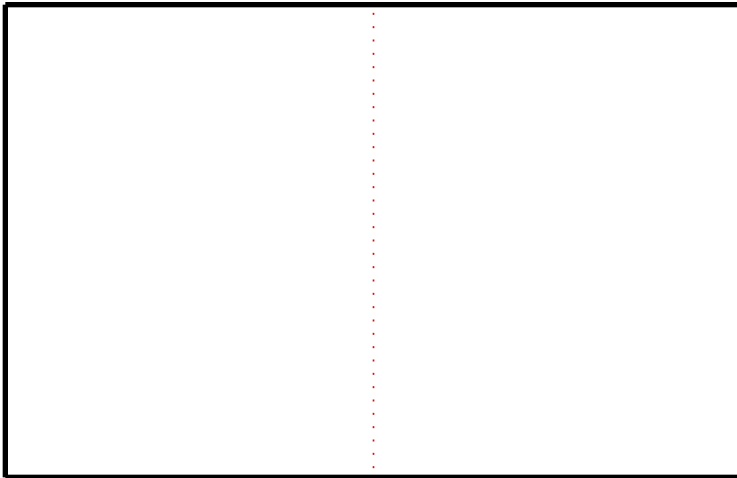
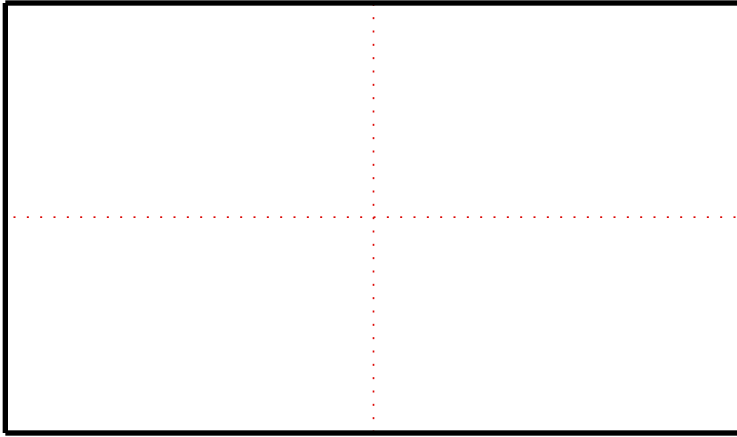


69.3 X 141.5 (12-SIDED) FULL FRAME LAYOUT

SKETCH PAD
 (Proportional to Full-Size)
 Bottom of Largest Half-Trapezoid
 is Approx. 18" wide
 (Ht., each panel = ~ 11")
For Frame Series #6200x12
 The Dome
 69.3"x141.5" / 8-sided
 Pg. 2 of 3

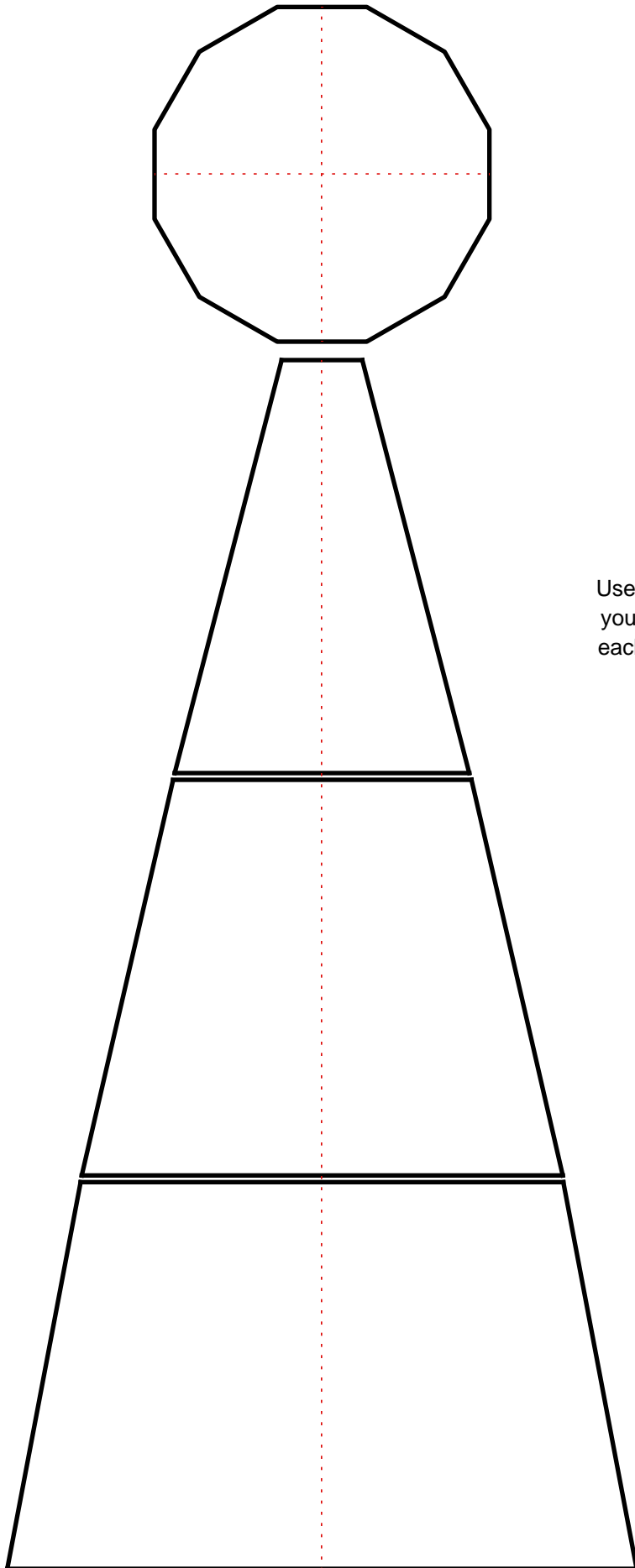
Use this SKETCH PAD to design custom designs for your dome. The lines shown are the "glass lines" of each panel, properly spaced as the panels will set in the frame.





SKETCH PAD
(Proportional to Full-Size)
Bottom of Largest Rectangle
is Approx. 18" wide
(Ht., each panel = ~ 11")
For Frame Series #6200x12
The Dome
69.3"x141.5" / 8-sided
Pg. 3 of 3

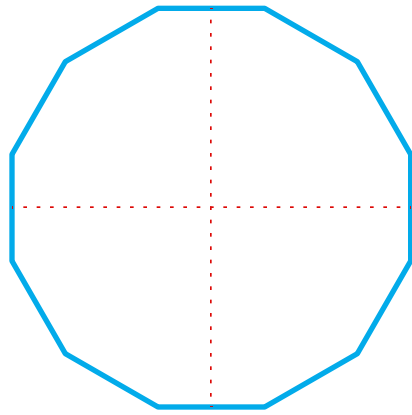
Use this SKETCH PAD to design custom designs for your dome. The lines shown are the "glass lines" of each panel, properly spaced as the panels will set in the frame.



SKETCH PAD
(Proportional to Full-Size)
Bottom of Largest Trapezoid is
Approx. 20" wide
(Ht., each panel = ~ 12")
For Frame Series #7200
77.5" / 12-sided

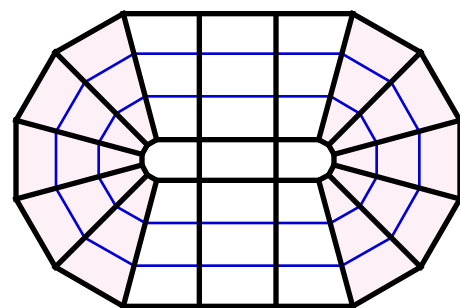
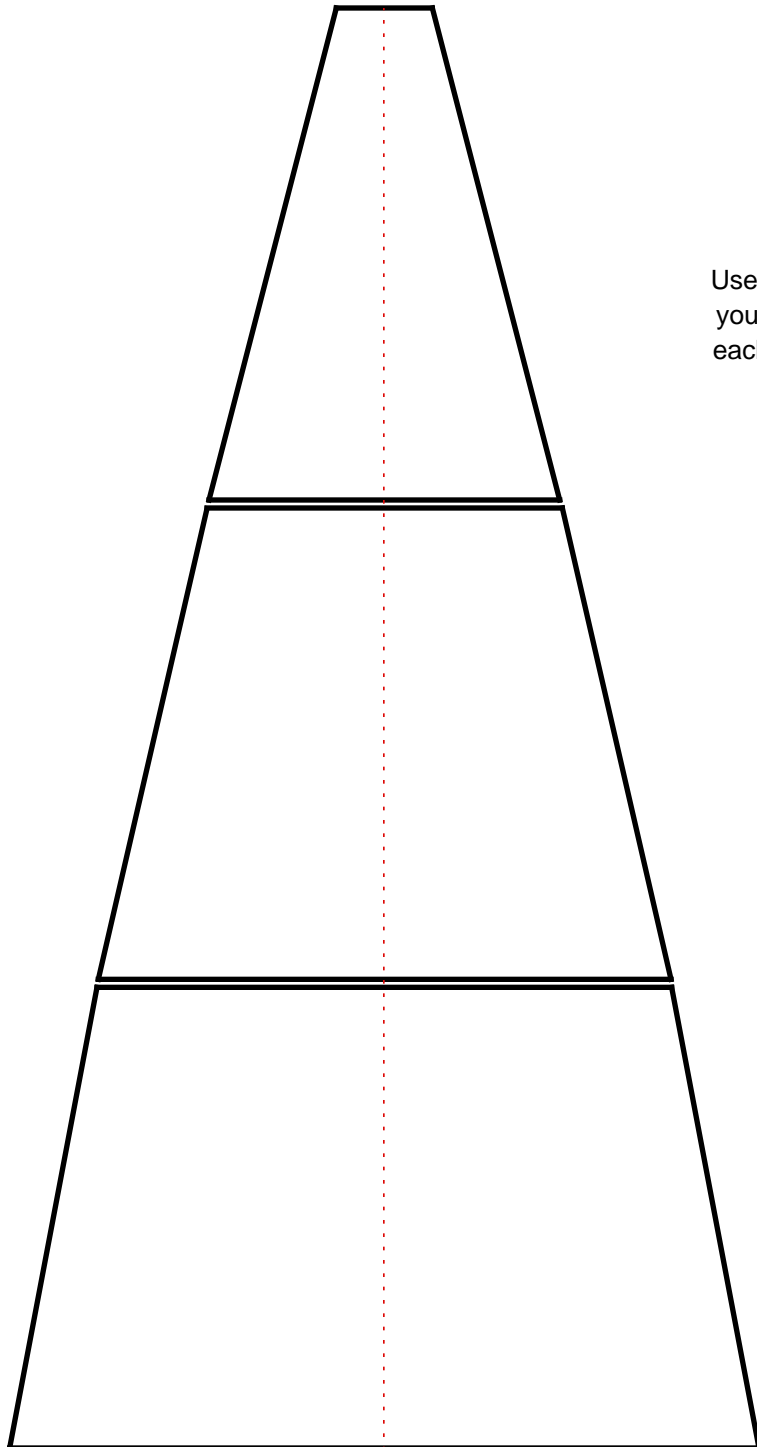
Use this SKETCH PAD to design custom designs for your dome. The lines shown are the "glass lines" of each panel, properly spaced as the panels will set in the frame.

Note: This 12-sided polygonal top plate is not part of 7200x10 frame, but is included here only for design purposes.

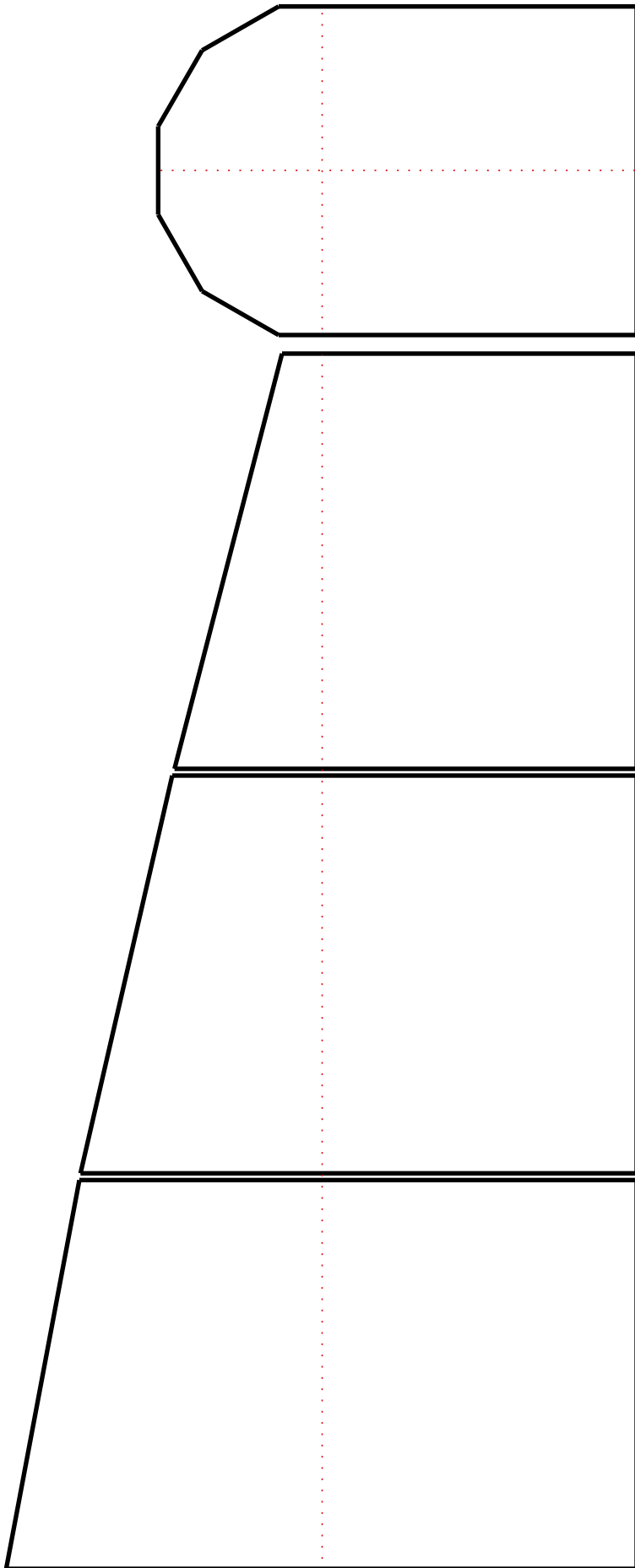


SKETCH PAD
(Proportional to Full-Size)
Bottom of Largest Trapezoid is
Approx. 20" wide
(Ht., each panel = ~ 12")
For Frame Series #7200X10
77.5"x 117.5" Elongated /
12-sided
**10 Trapezoidal End
Sections**
Pg. 1 of 3

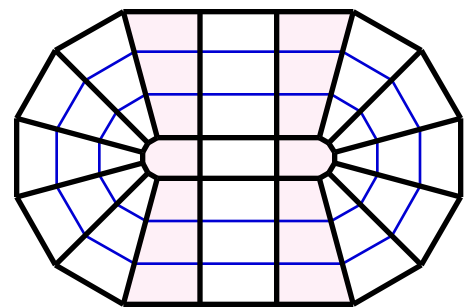
Use this SKETCH PAD to design custom designs for your dome. The lines shown are the "glass lines" of each panel, properly spaced as the panels will set in the frame.



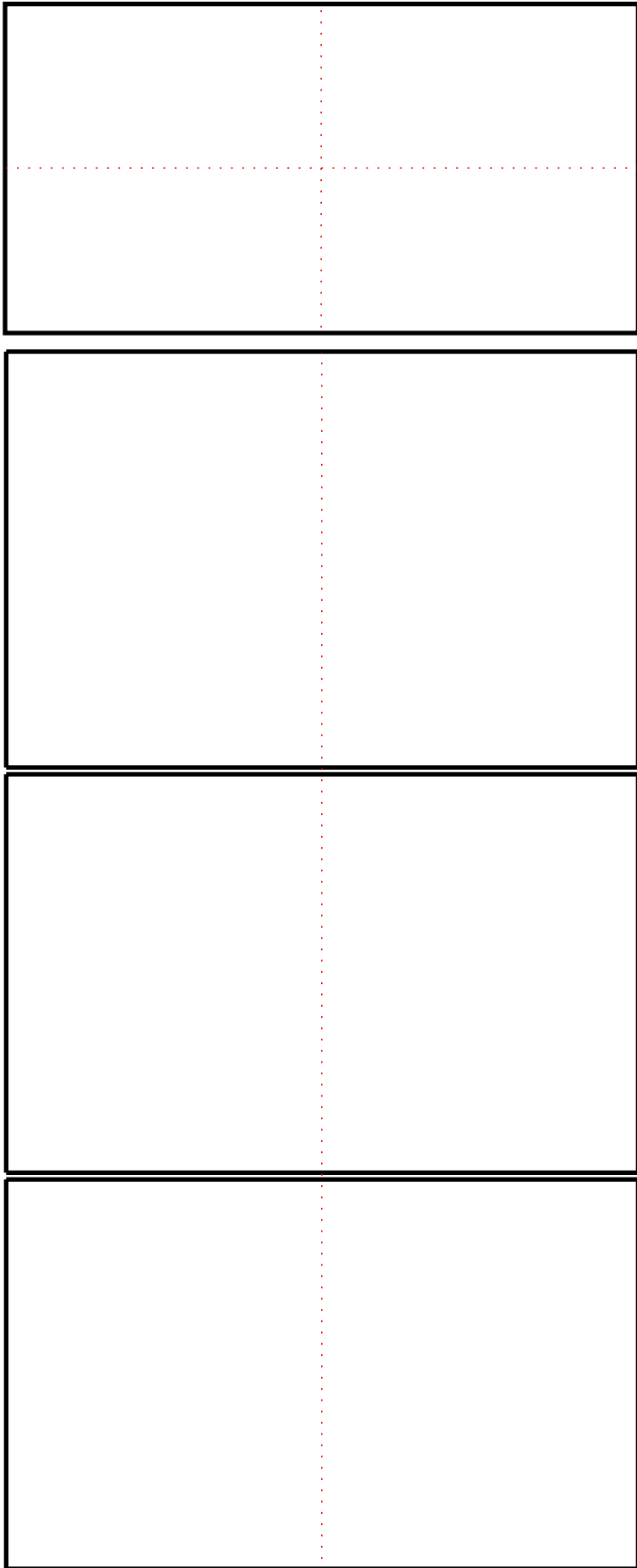
77.5 x 117.5 FULL FRAME LAYOUT



SKETCH PAD
(Proportional to Full-Size)
Bottom of Largest Half-Trapezoid
is Approx. 20" wide
(Ht., each panel = ~ 12")
For Frame Series #7200X10
77.5"x 117.5" Elongated /
12-sided
4 Half-Trapezoidal
Sections, 2 in TP
Pg. 2 of 3



77.5 x 117.5 FULL FRAME LAYOUT



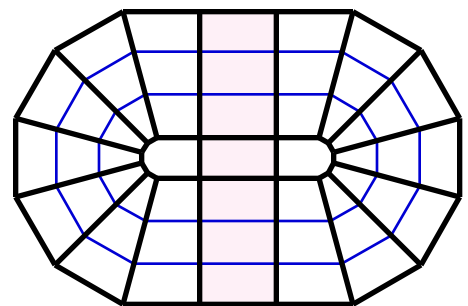
SKETCH PAD

(Proportional to Full-Size)
Bottom of Largest Rectangle is
Approx. 20" wide
(Ht., each panel = ~ 12")

For Frame Series #7200X10
77.5"x 117.5" Elongated /
12-sided

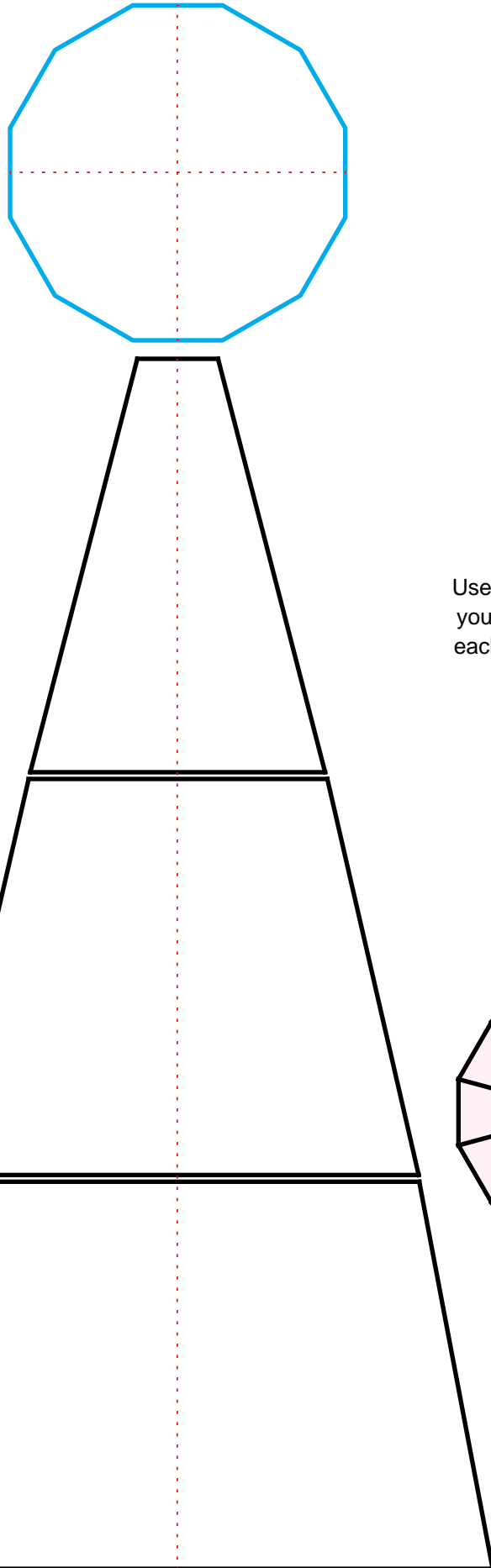
**2 Rectangular
Sections, 1 in TP**

Pg. 3 of 3



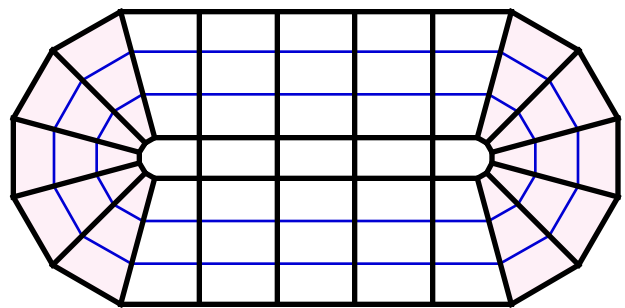
77.5 x 117.5 FULL FRAME LAYOUT

Note: This 12-sided polygonal top plate is not part of 7200x13 frame, but is included here only for design purposes.

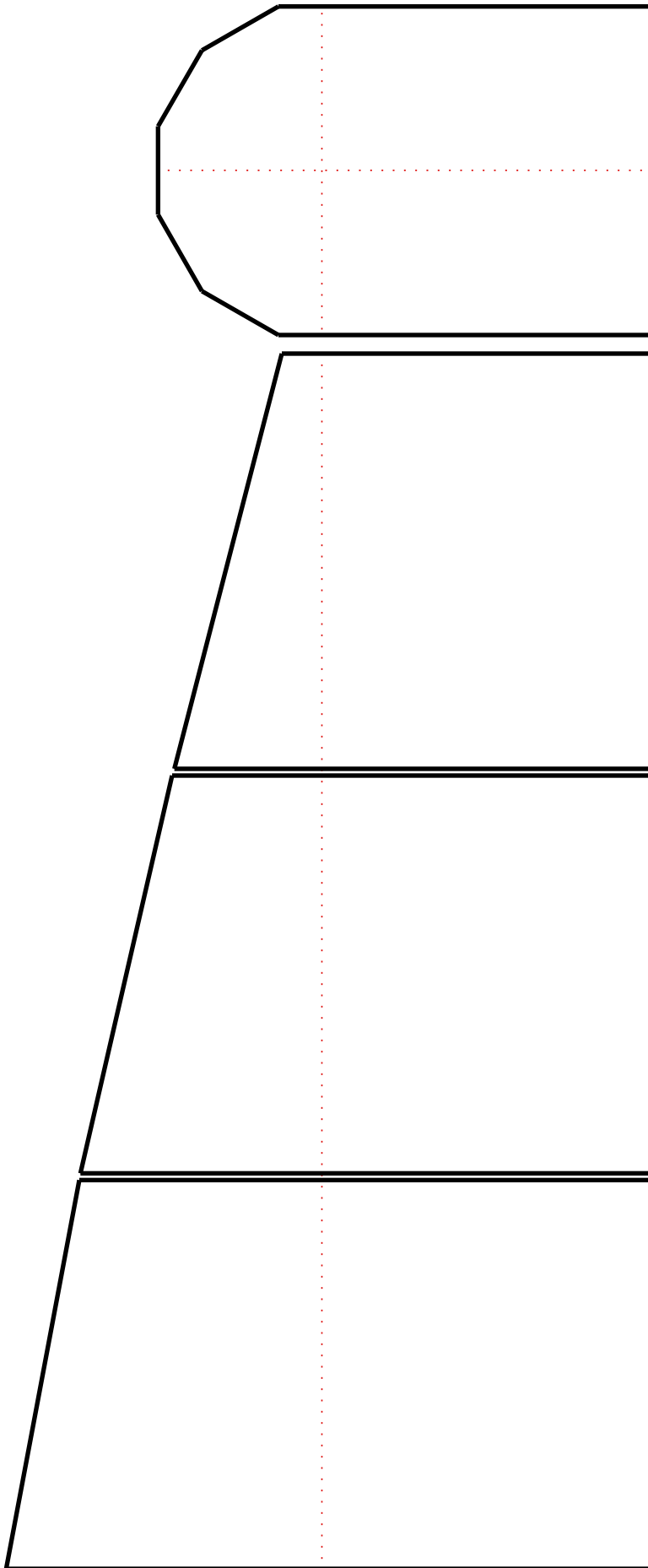


SKETCH PAD
(Proportional to Full-Size)
Bottom of Largest Trapezoid is
Approx. 20" wide
(Ht., each panel = ~ 12")
For Frame Series #7200X13
77.5"x 160.0" Elongated /
12-sided
**10 Trapezoidal End
Sections**
Pg. 1 of 3

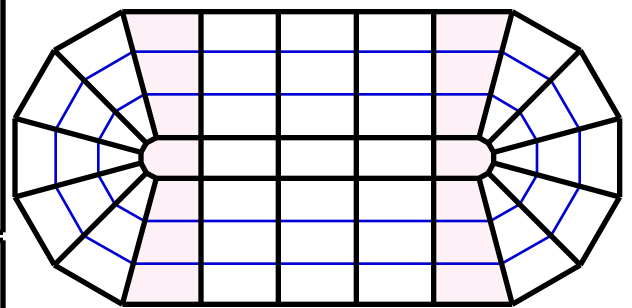
Use this SKETCH PAD to design custom designs for your dome. The lines shown are the "glass lines" of each panel, properly spaced as the panels will set in the frame.



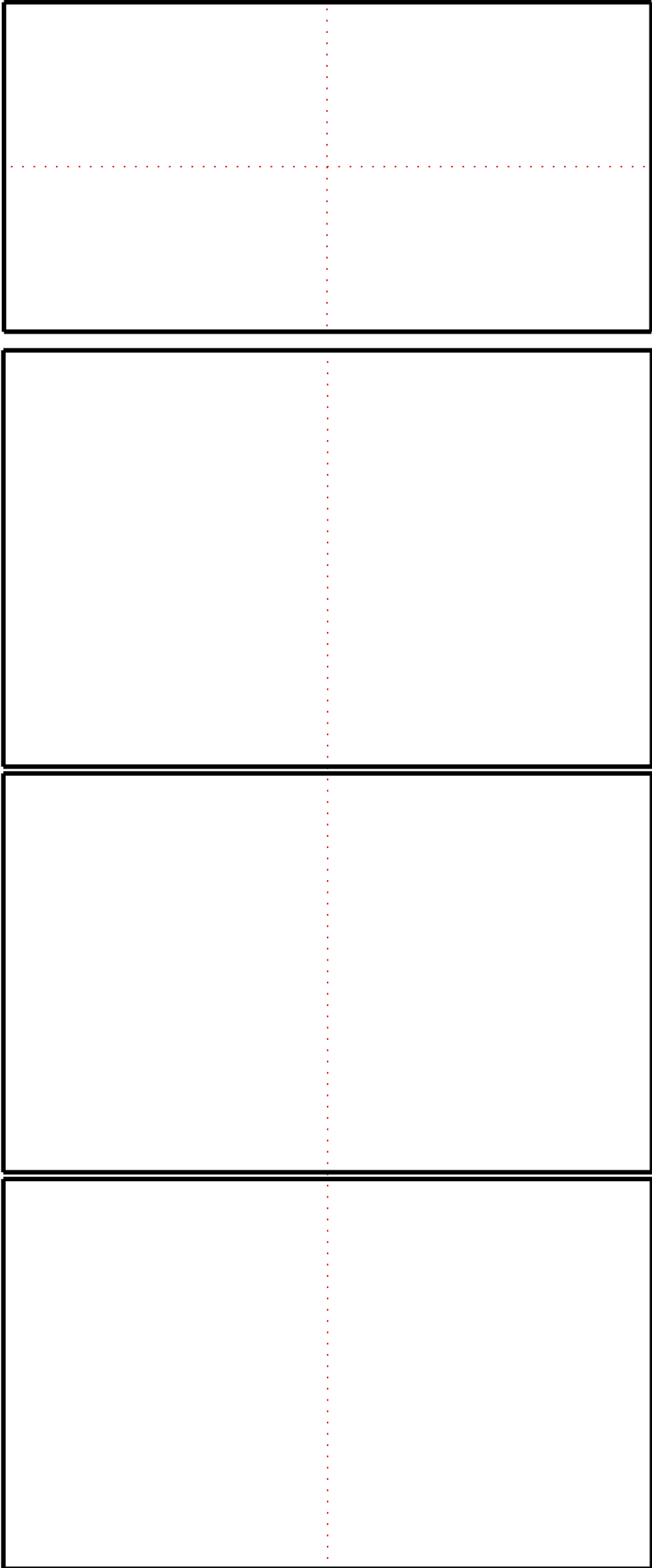
77.5 x 160.0 FULL FRAME LAYOUT



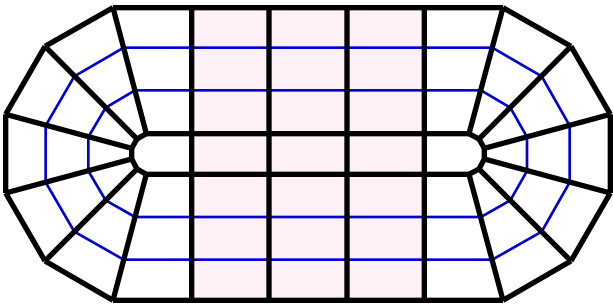
SKETCH PAD
(Proportional to Full-Size)
Bottom of Largest Half-Trapezoid
is Approx. 20" wide
(Ht., each panel = ~ 12")
For Frame Series #7200X13
77.5"x 160.0" Elongated /
12-sided
4 Half-Trapezoidal
Sections, 2 in TP
Pg. 2 of 3



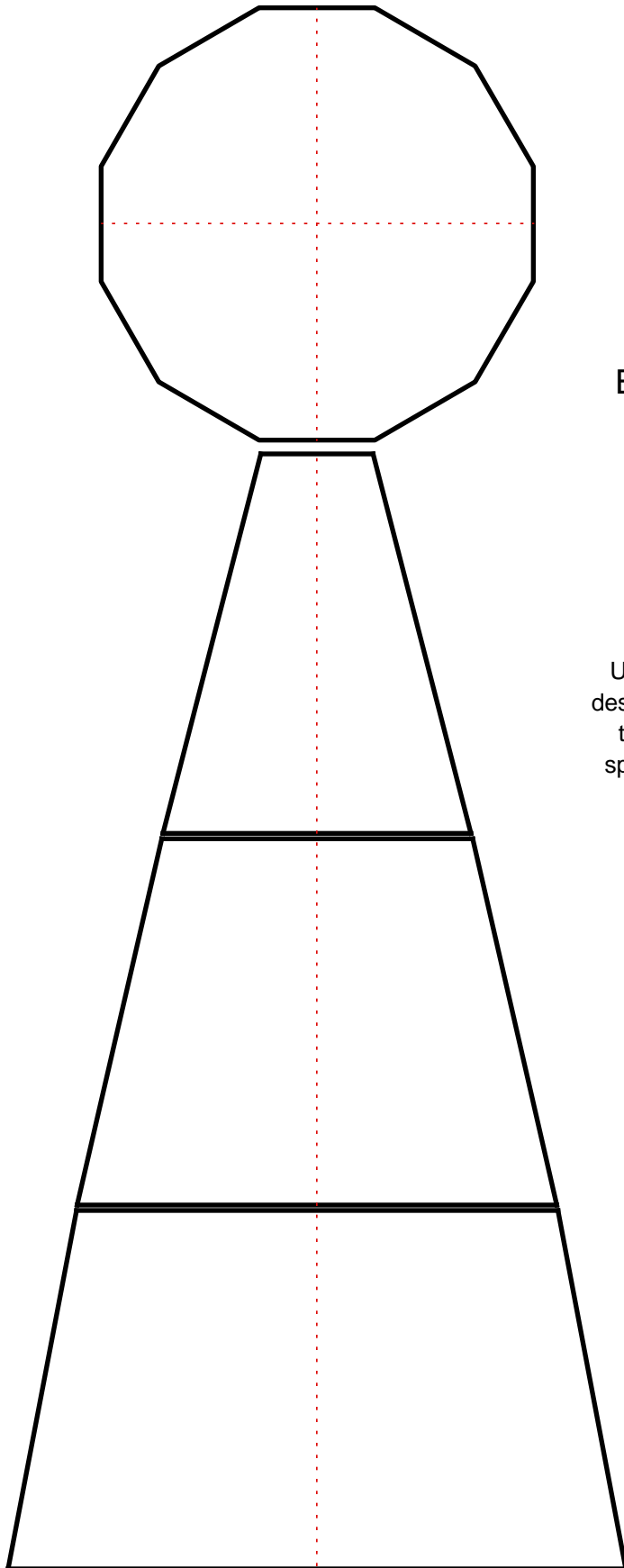
77.5 x 160.0 FULL FRAME LAYOUT



SKETCH PAD
(Proportional to Full-Size)
Bottom of Largest Rectangle is
Approx. 20" wide
(Ht., each panel = ~ 12")
For Frame Series #7200X13
77.5"x 160.0" Elongated /
12-sided
6 Rectangular
Sections, 3 in TP
Pg. 3 of 3



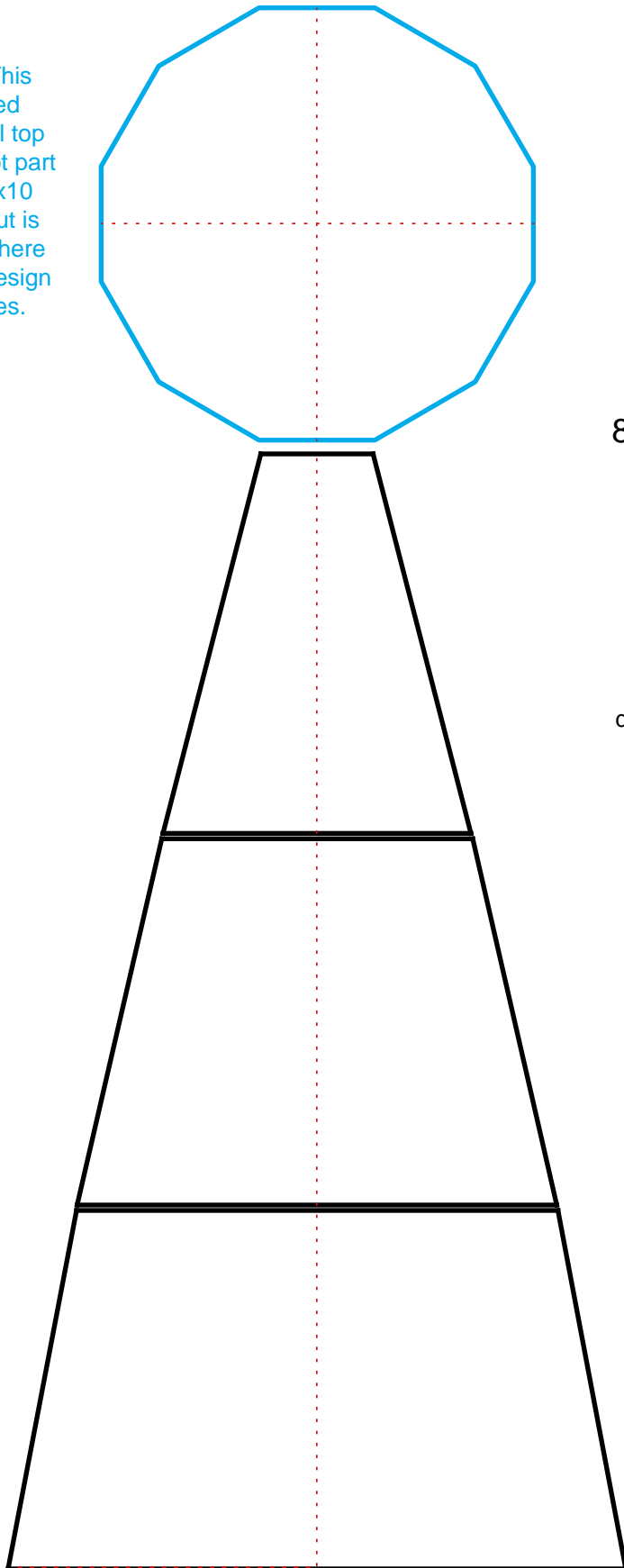
77.5 x 160.0 FULL FRAME LAYOUT



SKETCH PAD
(Proportional to Full-Size)
Bottom of Largest Trapezoid
is Approx. 24" wide
(Ht., each panel = ~ 14")
For Frame Series #8200
8' 93.5" / 12-sided

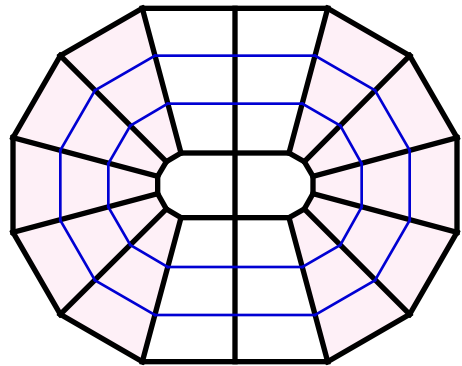
Use this SKETCH PAD to design custom designs for your dome. The lines shown are the "glass lines" of each panel, properly spaced as the panels will set in the frame.

Note: This 12-sided polygonal top plate is not part of 8200x10 frame, but is included here only for design purposes.

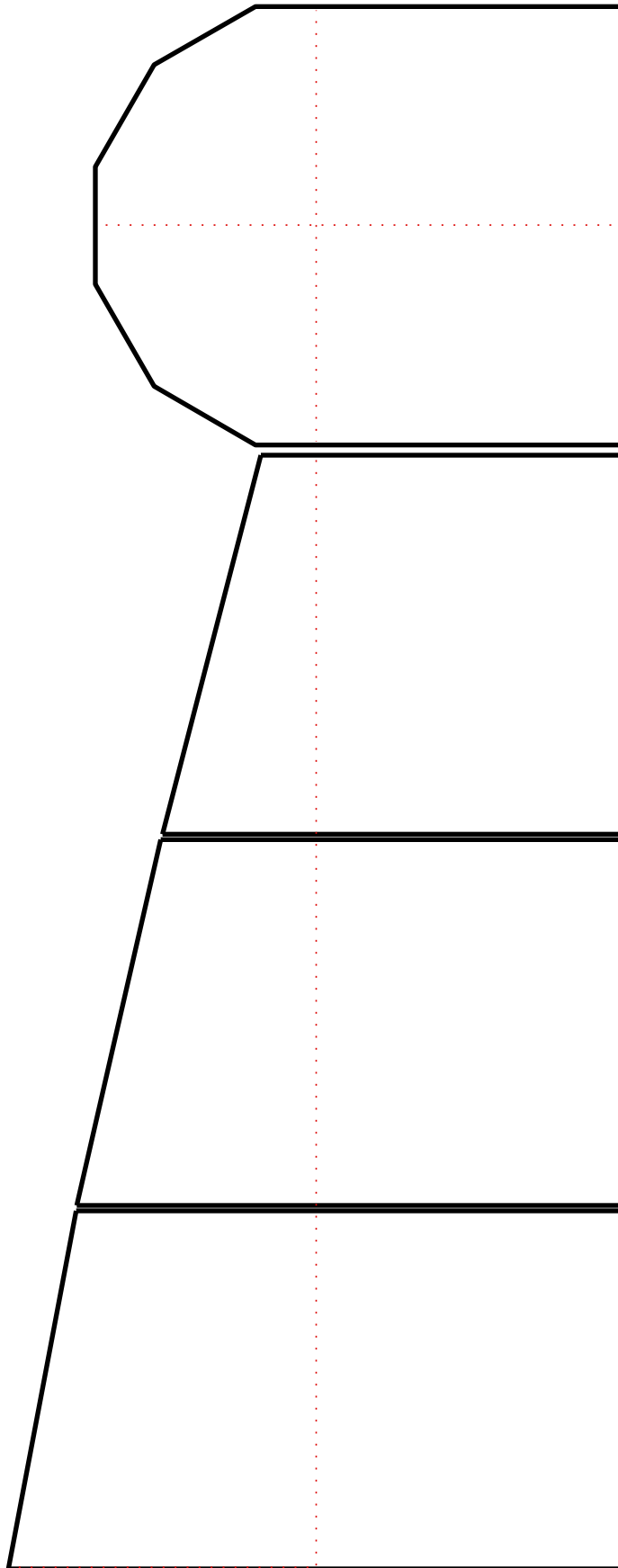


SKETCH PAD
(Proportional to Full-Size)
Bottom of Largest Trapezoid is
Approx. 24" wide
(Ht., each panel = ~ 14")
For Frame Series #8200x10
8'x10' 93.5"x117.5" / 12-sided
10 Trapezoidal End
Sections
Pg.1 of 2

Use this SKETCH PAD to design custom designs for your dome. The lines shown are the "glass lines" of each panel, properly spaced as the panels will set in the frame.

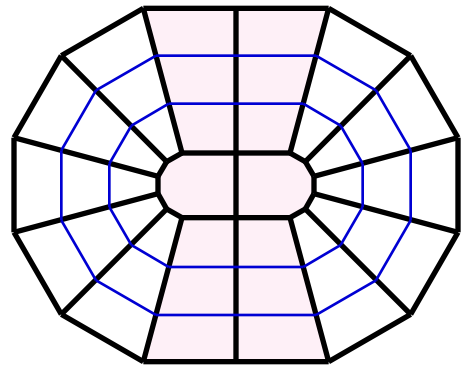


93.5 X 117.5 (12-SIDED)
FULL FRAME LAYOUT

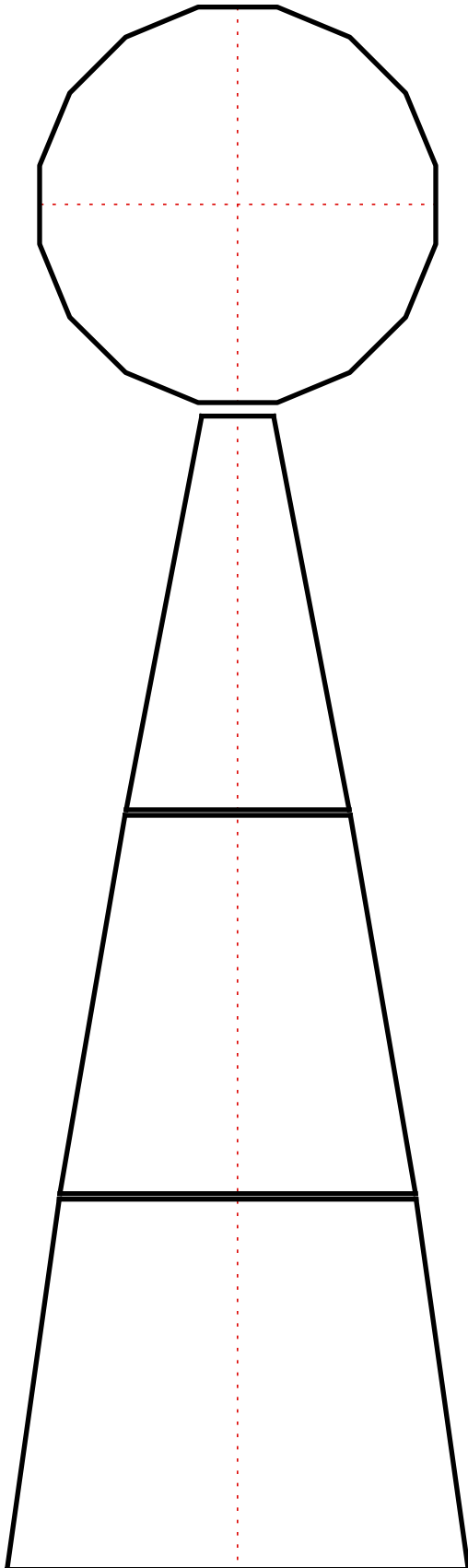


SKETCH PAD
(Proportional to Full-Size)
Bottom of Largest Half-Trapezoid
is Approx. 24" wide
(Ht., each panel = ~ 14")
For Frame Series #8200x10
8'x10' 93.5"x117.5" / 12-sided
**4 Half-Trapezoidal
Sections, 2 in TP**
Pg.2 of 2

Use this SKETCH PAD to design custom designs for your dome. The lines shown are the "glass lines" of each panel, properly spaced as the panels will set in the frame.



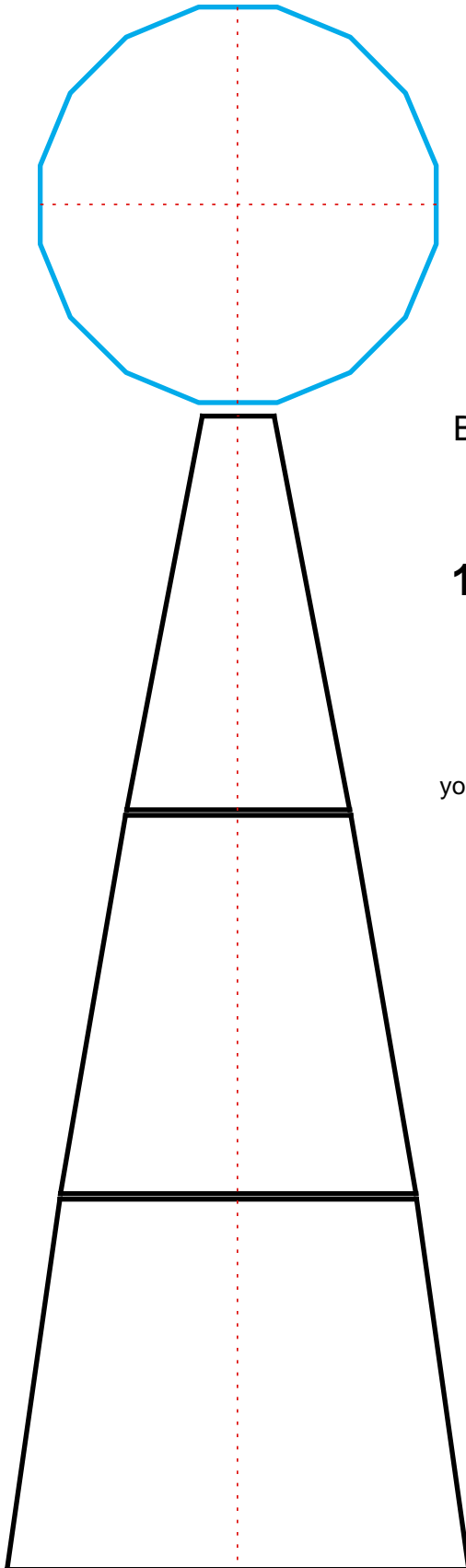
93.5 X 117.5 (12-SIDED)
FULL FRAME LAYOUT



SKETCH PAD
(Proportional to Full-Size)
Bottom of Largest Trapezoid is Approx.
18" wide (Ht., each panel = ~ 14")
For Frame Series #8600
8' (92.6" 16-SIDED)

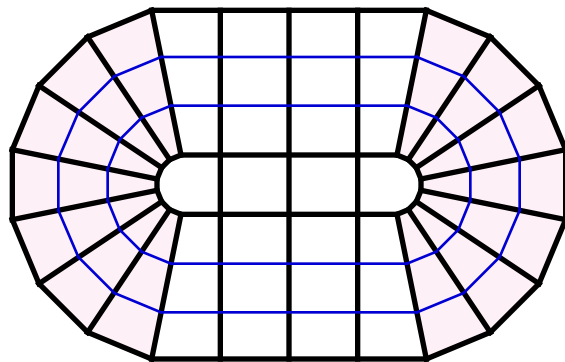
Use this SKETCH PAD to design custom designs for your dome. The lines shown are the "glass lines" of each panel, properly spaced as the panels will set in the frame.

Note: This 12-sided polygonal top plate is not part of 8600x12 frame, but is included here only for design purposes.

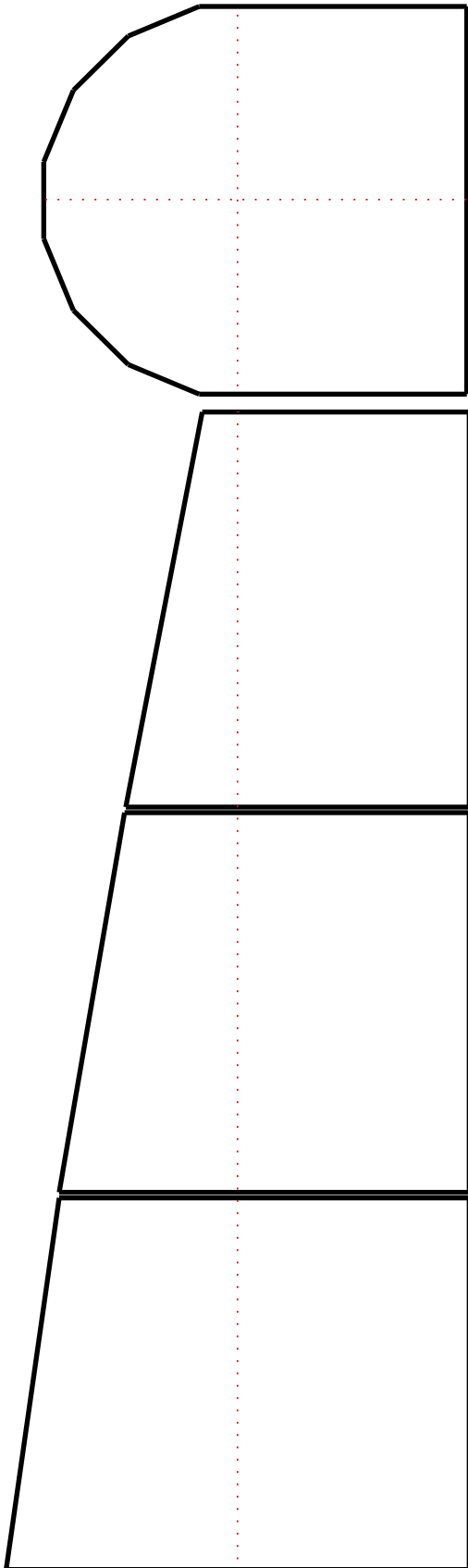


SKETCH PAD
(Proportional to Full-Size)
Bottom of Largest Trapezoid is Approx.
18" wide (Ht., each panel = ~ 14")
For Frame Series #8600x12
8'x12' (92.6"x146.5" 16-SIDED)
14 Trapezoidal End Sections
Pg. 1 of 3

Use this SKETCH PAD to design custom designs for your dome. The lines shown are the "glass lines" of each panel, properly spaced as the panels will set in the frame.

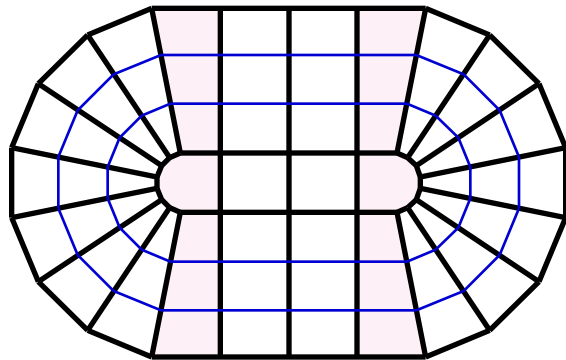


92.6 " x 146.5" (16-SIDED)
FULL FRAME LAYOUT

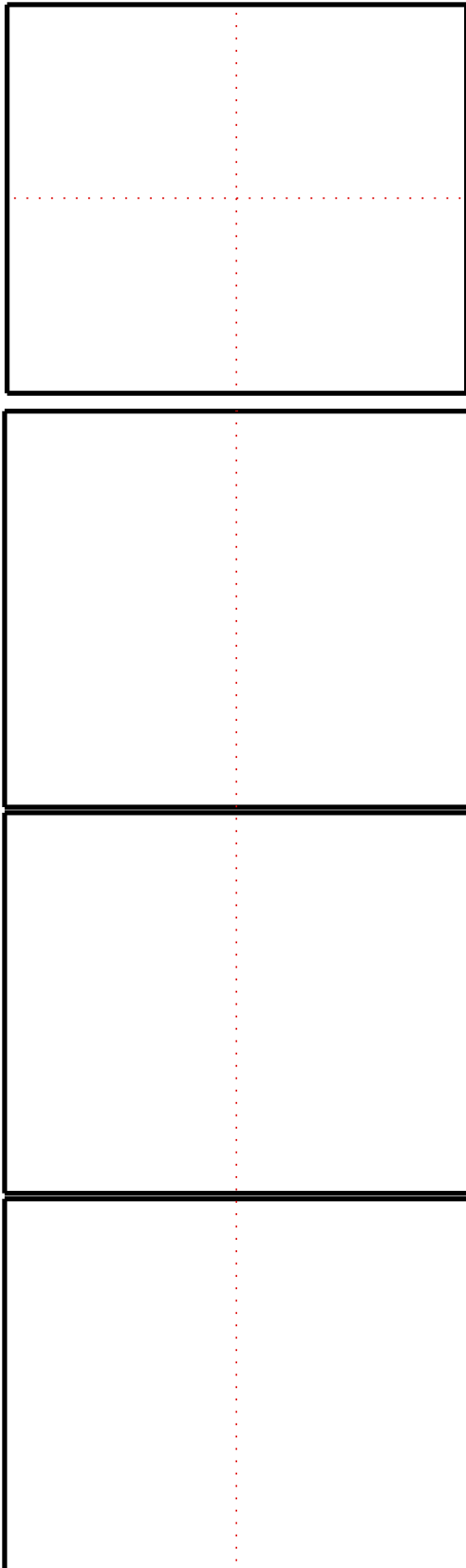


SKETCH PAD
(Proportional to Full-Size)
Bottom of Largest Half-Trapezoid
is Approx. 18" wide (Ht., each
panel = ~ 14")
For Frame Series #8600x12
8'x12' (92.6"x146.5" 16-SIDED)
**4 Half-Trapezoidal
Sections, 2 in TP**
Pg. 2 of 3

Use this SKETCH PAD to design custom designs for
your dome. The lines shown are the "glass lines" of each
panel, properly spaced as the panels will set in the
frame.

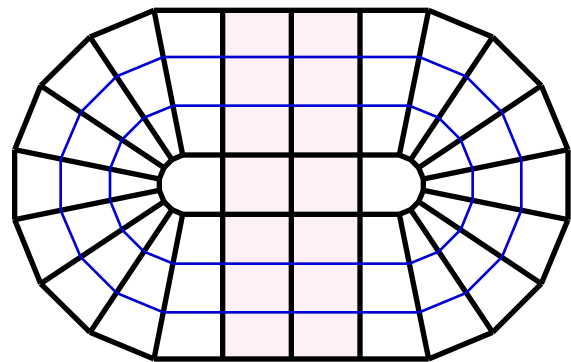


92.6 " x 146.5" (16-SIDED)
FULL FRAME LAYOUT

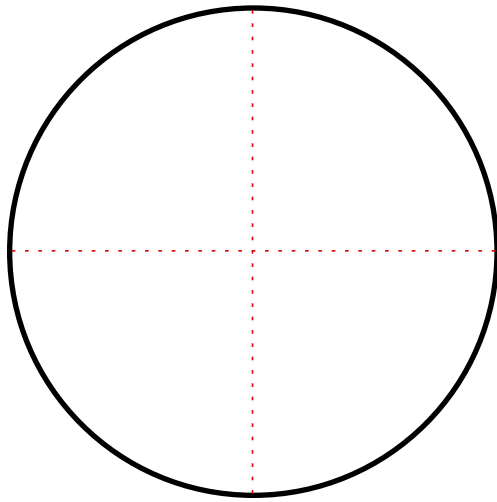


SKETCH PAD
(Proportional to Full-Size)
Bottom of Largest Rectangle is
Approx. 18" wide (Ht., each panel
= ~ 14")
For Frame Series #8600x12
8'x12' (92.6"x146.5" 16-SIDED)
4 Rectangular
Sections, 2 in TP
Pg. 3 of 3

Use this SKETCH PAD to design custom designs for
your dome. The lines shown are the "glass lines" of each
panel, properly spaced as the panels will set in the
frame.

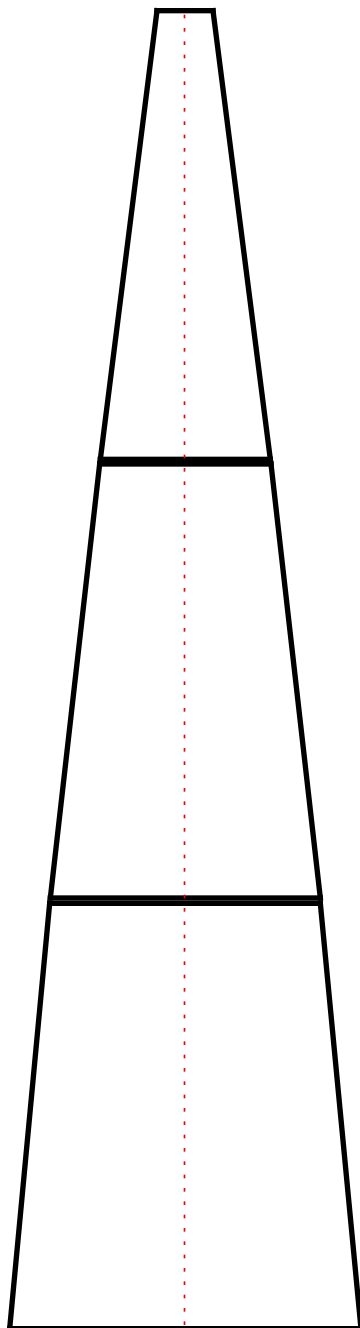


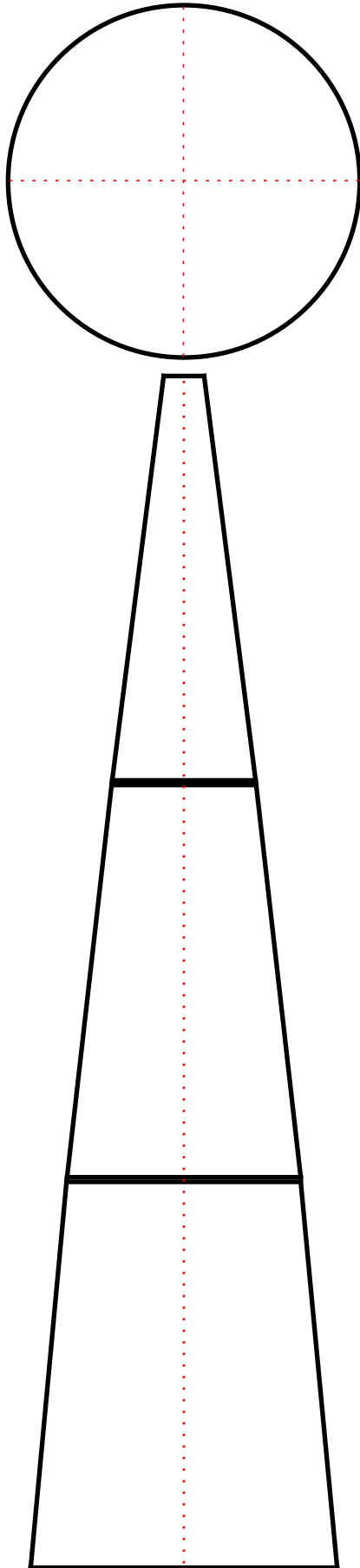
92.6 " x 146.5" (16-SIDED)
FULL FRAME LAYOUT



SKETCH PAD
(Proportional to Full-Size)
Bottom of Largest Trapezoid is
Approx. 16" wide
(Ht., each panel = ~ 19")
For Frame Series #10400
123" Dome Frame / 24-sided

Use this SKETCH PAD to design custom designs for your dome. The lines shown are the "glass lines" of each panel, properly spaced as the panels will set in the frame.

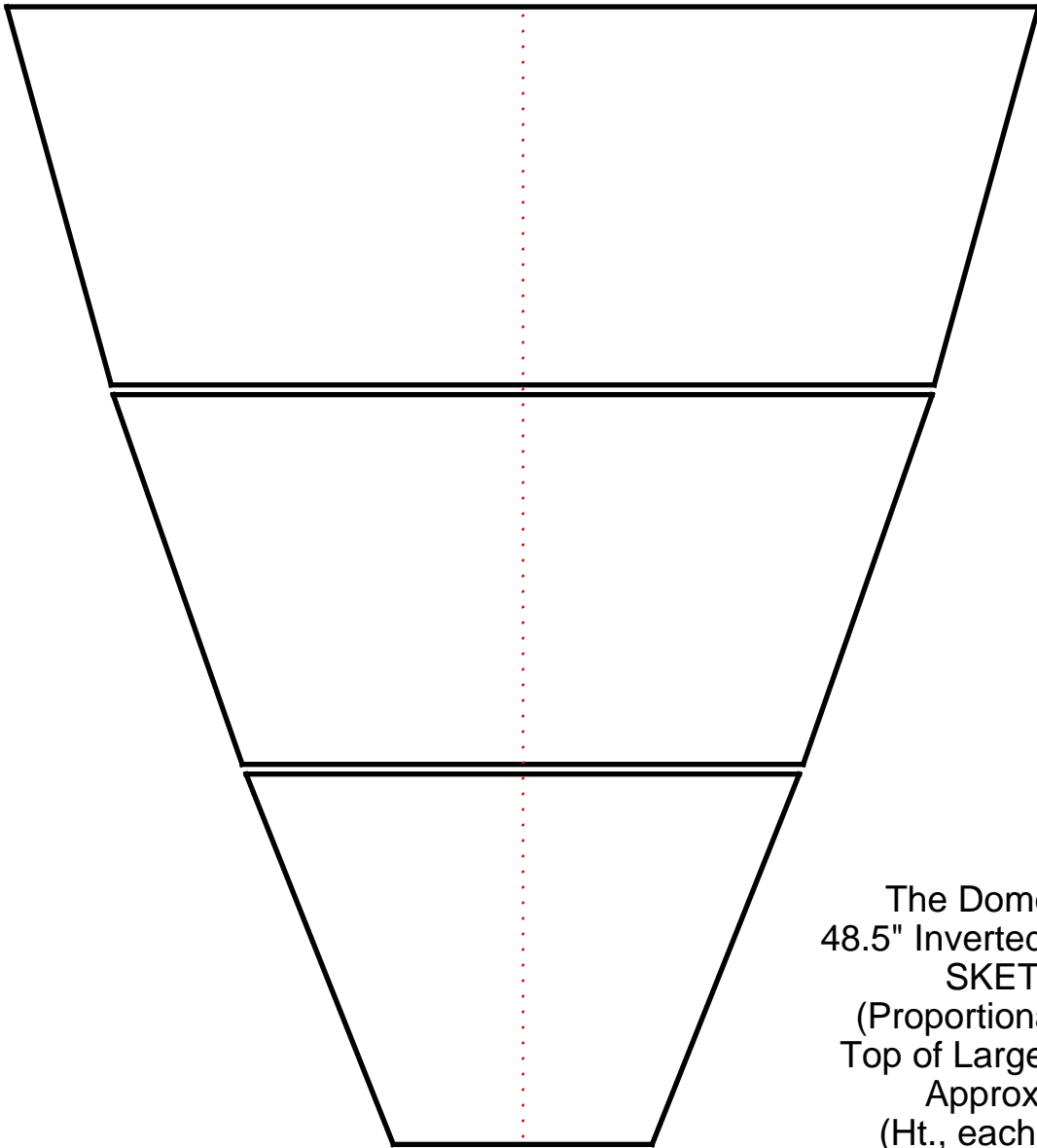




SKETCH PAD
(Proportional to Full-Size)
Bottom of Largest Trapezoid is
Approx. 19" wide
(Ht., each panel = ~ 24")
For Frame Series #12400-075
147" Dome Frame / 24-sided

(Note: Frame Series #12400 is not always available, and must be special ordered. This is not a self-supporting frame like frame #10400 -- cable supports are required for each of the 24 arms.)

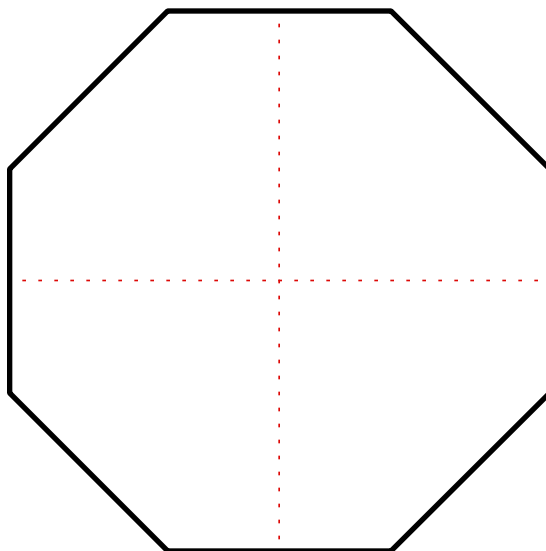
Use this SKETCH PAD to design custom designs for your dome. The lines shown are the "glass lines" of each panel, properly spaced as the panels will set in the frame.



The Dome....Inverted!
48.5" Inverted Dome / 8-sided
SKETCH PAD
(Proportional to Full-Size)
Top of Largest Trapezoid is
Approx. 18" wide
(Ht., each panel = ~7")

**For Frame Series
#R4825**

**This frame hangs BELOW ceiling,
unlike our normal recessed frames.**



Use this SKETCH PAD to
design custom designs for
your dome. The lines
shown are the "glass lines"
of each panel, properly
spaced as the panels will
set in the frame.